

• FURNITURE • LAMINATES • BAMBOO

# Indian Wood & Allied Panels

Volume 16 • Issue 4

A Quarterly Publication on Plywood / Wood & Bamboo Based Panel Products

October - December 2022



## India - An Exporter of Wood and Wood Products

*Eight-Point Action Plan for providing impetus to this sector, is proposed....page 2*



**The future of plywood in India is very bright: Duroply Industries**  
page....12



**CenturyPly mulls particle board unit in TN at an investment of ` 550 crore**  
page....13

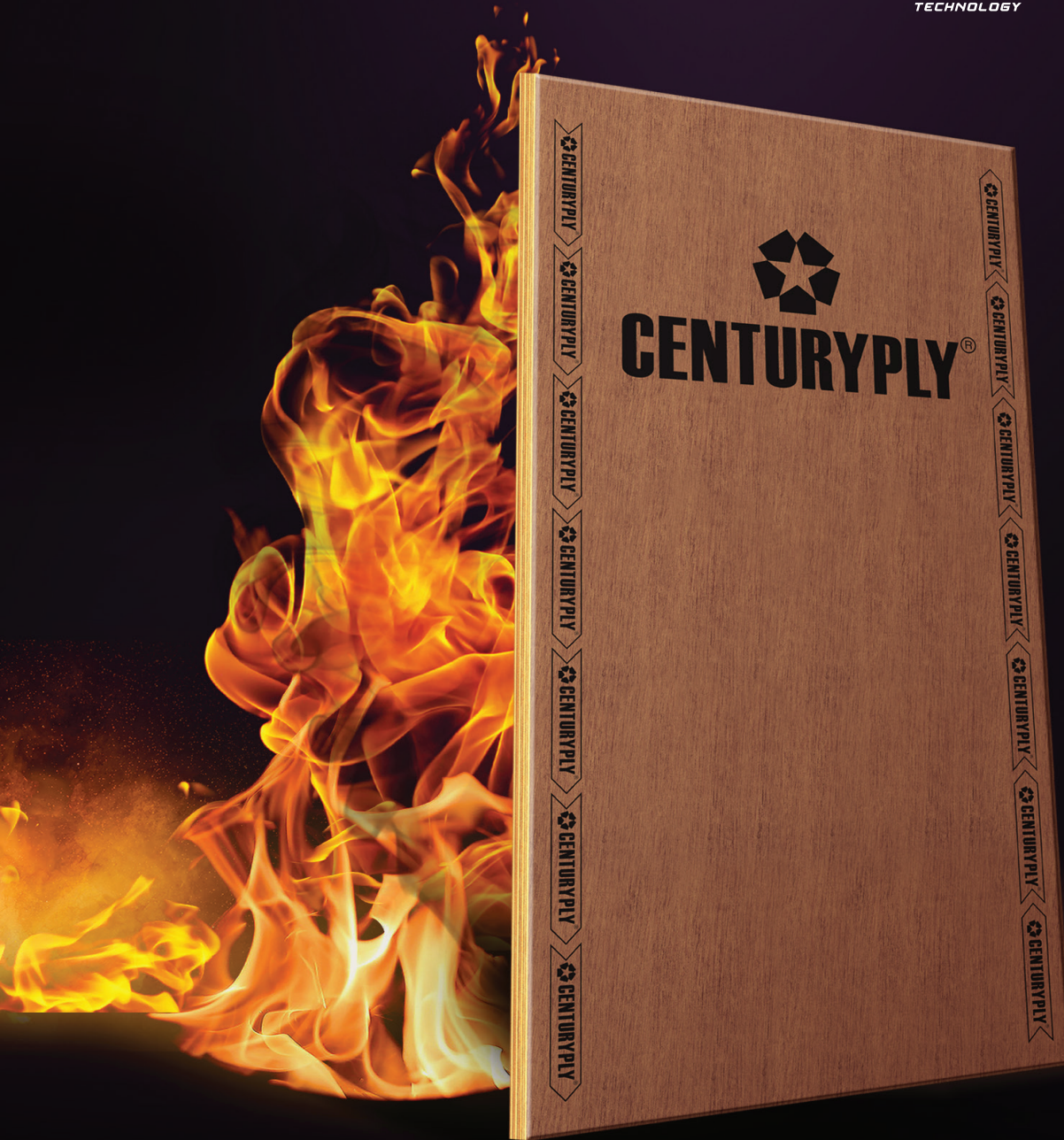


**Amulya Mica organised its first Dealers meet at Varanasi....**  
page....15

# Aag Se Bachaye



Now with



'Aag Se Bachaye' is creatively interpreted from test reports under standard test condition for 19 mm thick ArchitectPly and Club Prime. CenturyPly with FireWall Technology fares much better in containing spread of fire as per 3 standards - IS 5509, BS 476 Part 7 & ASTM E84 - giving you critical time to act in case of fire. Please visit [www.centuryply.com](http://www.centuryply.com) for more details.

**Corporate Office: Century House, P-15/1, Taratala Road, Kolkata - 700088**

+91 33 39403950 1800-5722-122 [customerhelpdesk@centuryply.com](mailto:customerhelpdesk@centuryply.com) Century Plyboards India Limited [www.centuryply.com](http://www.centuryply.com)

Century Plyboards (India) Ltd. Century Plyboards India Ltd Century Plyboards (India) Limited Century Plyboards (I) Limited

A Quarterly Publication on Plywood / Wood & Bamboo Based Panel Products

Volume 16 • Issue 4 Oct-Dec 2022

### Editorial Advisory Board

- Mr. A.K. Mukherjee
- Dr. J. Bhattacharyya
- Dr. C.N. Pandey
- Mr. Sajjan Bhajanka
- Mr. P.G. Mukundan
- Mr. Ajoy Kumar

### Editor

Jaydeep Chitlangia

### Hony. Country Editors/Representatives

Mr. Olman Serrano, FAO - Rome

### Indian Correspondents

Dr. A. Panda

### Advertising/Business Development

Anthony Fernandes

### Graphic Design & Layout

Sushil Kumar

### Editorial & Publisher's Office

#### Federation of Indian Plywood & Panel Industry (FIPPI)

404, Vikrant Tower, 4 Rajendra Place,  
New Delhi-110 008, India  
Tel: +91-11-25755649,  
Fax: +91-11-25768639  
E-mail: fippi@fippi.org,  
Website: www.fippi.org

The views expressed in this issue are not the views of the Publisher or Editor.

No part of this magazine may be reproduced in part or in full without the permission of FIPPI.

### SUBSCRIPTION

“Indian Wood & Allied Panels” is published four times a year.

### Mode of Payment:

Demand Draft /Cheque to be issued in favour of “Federation of Indian Plywood & Panel Industry”, payable at New Delhi.

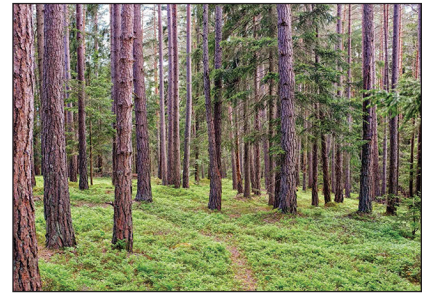
Subscription Charges	India INR	Overseas US\$
One Year	800	80
Five Year	4000	400

Printed & Published by Anthony Fernandes, on behalf of Federation of Indian Plywood & Panel Industry.

# C O N T E N T S

6

**From wood to resource: Market updates in times of challenges**



19

**Plantation Furniture making a comeback with British Colonial Designs in India**



21

**Bamboo hoods brings bamboo back into the spotlight**



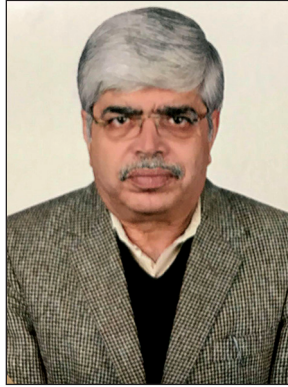
24

**Sonear Industries to set up 2 units in Haryana, UP for about ₹ 150 crores**



India - An Exporter of Wood and Wood Products	2
Rushil's World-class, Automated, Make in India MDF Plant to boost climate protection....	4
SCM at the 26th International Timber Construction Forum (IHF)	10
The future of plywood in India is very bright: Duroply Industries	12
Ministry of Agriculture and Farmers Welfare (Plant Quarantine - Regulation of Import....	13
CenturyPly mulls particle board unit in TN at an investment of ₹550 crore	
Duroply Industries reports standalone net profit of ₹ 1.19 crore in the September 2022....	14
Thin board MDF plant by Siempelkamp fulfilled for Borg Manufacturing	
Amulya Mica organised its first Dealers meet at Varanasi on 16 December 2022	15
Canadian wood turns the spotlight on a new espresso bar in Jaipur	16
Greenply Introduces (E-0) Program On Health & Wellbeing For Carpenters	17
Spot the difference	18
FSC: Perhutani pine resin gets Indonesia's first ecolabel certificate	19
Merino showcases it's HPL (High-Pressure Laminate) based Airport Infrastructure....	20
Japan's First Hybrid Timber Hotel Completed	
Arunachal Pradesh's 1st Ever Airport Has Gate Built of Bamboo & Cane	22
CPCB proposes subsidy for pellet manufacturers to promote green fuel	22
Durian Introduces Premium MID-Century Modern Furniture	23
Stora Enso launches wood building kit for low-carbon, pre-manufactured construction	
Environment Ministry grants huge relief to Indian handicraft exporters ahead of CITES....	24
EPLF: Oak and natural colours will trend in 2023	25
Modvion secures partnership with RES to build wooden towers for future wind parks	26
Govt approves formation of advisory group to track developments in bamboo sector	
Exhibition Outlook 2023	27

# India - An Exporter of Wood and Wood Products



By R. K. Sapra, IFS Rtd\*



The land under Trees Outside Forests (TOF) including agroforestry covers about 8.9% of geographical area of India and produces about 85 million cubic metres of wood annually as per the India State of Forest Report, 2021. Due to major thrust on conservation of forests, the availability of timber from forests has declined over the years and the farm wood could not make up for the shortfall of timber entirely. The government liberalised the policy for import of timber in the nineties. As per the report Sustainable Trade of Wood and Wood based Products in India, 2021, 15 million cubic metres roundwood equivalent of wood and wood products for about INR 45,000 crore were imported.

Agroforestry was identified as one of the instruments for mitigating the effects of climate change in the union budget of 2022-23. The agroforestry mostly depends on private investments but needs some innovative policy interventions from the government which may facilitate its growth along with the development of wood-based industries. The time bound actions in this sector will create more income for the farmers and employment opportunities for rural youth which will reduce the rural distress. It will create business opportunities, earn tax revenue and foreign exchange. Hence, it is suggested that a booster dose may be provided to the agroforestry and wood-based industries in the union budget of 2023-24 for making India a net exporter of wood and wood products by the year 2030. An

Eight-Point Action Plan for providing impetus to this sector, is proposed as follows:

1. The common (10-15) tree species which are planted in farmlands throughout the country, may be excluded from the purview of timber transit rules in all the states to allow their unhindered cultivation, felling, transport and usage.
2. A digital portal may be established for registration of all farm plantations which may help in certification of farm wood and quantification of the carbon sequestration by tree crops and may also provide hassle free felling and all-India transit permits for the species other than those exempted from felling and transport permission {Ministry of Environment, Forest and Climate Change (MoEFCC)}



3. Many state governments have already declared farm wood as an agricultural produce for collecting the marketing fees, hence all the incentives, concessions and facilities like integration with Digital National Agricultural Market (eNAM), priority lending, kisan card, etc., which are available to agricultural crops may also be extended to tree crops (Ministry of Agriculture and Farmer Welfare (MoAFW)).

\*Ex MD cum PCCF Haryana Forest Development Corporation, rk\_sapraus@yahoo.com



LAMINATES | PLYWOOD | WPC  
GHAR SAJAYE SAATH NIBHAYE

CELEBRATING  
**18 YEARS** WITH  
**5 CRORE**  
LAMINATE SHEETS

Amulya Mica would like to express their gratitude to all of its customers, clients, channel partners, architects, and interior designers. This accomplishment could have not been possible without you all.

Thank you once again from Amulya Mica to everyone.

**LAMINATES:**



ANTI-BACTERIAL

**WPC/PVC BOARDS:**



LEAD-FREE



ANTI-BACTERIAL



RoHS COMPLIANT

**PLYWOOD:**



ATAFT (ANTI-TERMITE ANTI-FUNGAL TREATMENT)

**Applications:** Kitchens • Restaurants • Offices • Hospitals

[www.amulyamica.com](http://www.amulyamica.com) | [crm@amulyamica.com](mailto:crm@amulyamica.com) | Call us: 1800 233 1468

4. Agroforestry Board on the pattern of Tea Board, Coffee Board, etc., may be set up for integrated development of agroforestry and wood-based industries. Large foreign and local industrial groups may be incentivised to manufacture quality wood products for local market and export (Ministry of Commerce and Industries (MoCI).
5. A high-powered committee consisting of Ministry of Environment, Forest and Climate Change (MoEFCC), Ministry of Agriculture and Farmers Welfare (MoAFW) and Ministry of Commerce & Industry (MoCI) may be constituted to speed up the process of decision making in the agroforestry sector (Cabinet Secretariat).
6. Research and Development (R&D), extension and marketing of tree crops may be undertaken by the public and private sector organisations such as Indian Council of Forestry Research and Education (ICFRE), Indian Council of Agricultural Research (ICAR), ITC,

WIMCO, etc., in a coordinated manner (MoEFCC, MoAFW and MoCI).

7. The licensing policy of wood-based industry which is based on farm wood may be liberalised (MoEFCC).
8. Review export and import policy to encourage domestic production of wood and wood products for local market as well as for export (MOCI).

A lot of recommendations regarding development of agroforestry sector have been made in the past by various committees and organisations but the pace of reforms is slow. It is high time that bold initiatives and reforms are undertaken at the level of the GOI and the states. The above-mentioned interventions will help in meeting the raw material demands of the woodbased industry, livelihood needs of the people living in and on the fringes of the forests, will increase the forest and tree cover while significantly contributing in mitigating the effects of climate change. □


## **Rushil's World-class, Automated, Make in India MDF Plant to boost climate protection in the region**

**WORLD-CLASS, AUTOMATED MDF PLANT IN INDIA**  
Shaping a Better Planet with Smarter Living Solutions

**RUSHIL**  
DECOR LIMITED  
WE'VE MADE IT

**Shaping Circular Economy**

- Agroforestry-led future boards
- Boosting climate protection
- Sophisticated, safest and smartest
- Stewarding resources for better
- Creating sustainable livelihood



**Investing for Growth**

- Rs. 500 crore plus investments
- Rs. 1,000 crore full capacity revenue
- 2,40,000 CBM annual capacity
- 15% to 20% CAGR MDF Category growth
- Robotic, automated production

**R**ushil Décor, a global leader in smarter living solutions, transforming contemporary residential and commercial spaces expanded its global operations with the setting up of a first-of-a-kind, world-class, state-of-the-art, agroforestry-based, sustainable, environment-friendly future boards (medium density fiberboard or MDF) making plant in Achutapuram, Andhra Pradesh, India.

Driven by smart manufacturing, and fully-automated robotic production, the technologically advanced plant is strategically located close to raw material sourcing agroforestry-plantations, creating sustainable livelihood, reducing the transportation impact, and lower emissions.

The investment in the fully-integrated plant is significant and amounts to over Rs.500 crores. The investment illustrates Rushil Décor's long-term vision to boost indigenous production capacity and operational efficiency, expanding the range of value-added solutions and strengthening its commitment to the sustainability of the business and the planet.

Krupesh G Thakkar, CMD, Rushil Décor Ltd, India, says "Rushil Décor's automated, intelligent, integrated, and innovative plant represents a drive to steward resources well and

contribute to a better future for the local communities, the nation, and the planet. Strategically located to deliver faster deliveries to global markets, RDL's world-class, make-in-India plant will further boost the nation's existing capacity to produce MDF, reduce costly imports, and save the country's foreign exchange reserves – shaping a better planet."

This automated plant with an annual full capacity of about 2,40,000 CBM is amongst the largest, most sophisticated, safest, and smartest manufacturing plants in the world entailing substantial investment in the industry of engineered fiberboards. With the help of this plant, RDL has the potential to generate a revenue of Rs. 1000 crore topline in MDF segment on full capacity utilization.

According to industry insights, growing consumer awareness and a wide range of application is driving increased adoption and consumption of MDF in India, as the industry is expected to grow at a CAGR of 15%-20% from an estimated Rs. 3,000 crores in 2021 to Rs. 6,000 crores by 2026.

India is a significant player in MDF, being used as a leading interior infrastructure materials. Discerning consumers and modern offices who look for responsible products that reduce carbon footprint, rapid urbanization, rebound in realty, and rising nuclear families will boost MDF growth. Driving this growth will be the Indian work-from-home (WFH) furniture market which is expected to be US\$ 3.49 billion by FY2026. About 60% of the consumption of MDF is for commercial use, though the residential segment is gaining momentum. Compared to 70 % market share in developed nations, MDF has just 30% market share in India reflecting the high potential for MDF. MDF is an engineered product made of wood fibers bonded under high pressure using thermosetting resins and wax, forming beautiful panels by applying high temperature and pressure, for strength. Rushil Decor is a leader in the decorative high pressure laminates market in India. □

NEW-AGE  
INTERIORS  
ke liye  
NEW-AGE  
WOOD



Why is  
**VIR MAXPRO**  
designer, carpenter aur owner ka **BFF?**



**Superior quality | Easy workability | Fast availability**

Maximum strength

Highly versatile

Specially engineered for specialised applications

Moisture, termite, borer and fungus resistant

Decorative foils, laminate, veneer and paint-friendly

Perfect for creating unique shapes and intricate designs



INTERIOR GRADE MDF



EXTERIOR GRADE MDF



HDFWR

Toll Free No.: 1800 233 7952

[www.vir-mdf.com](http://www.vir-mdf.com) | [info@rushil.com](mailto:info@rushil.com)

# From wood to resource: Market updates in times of challenges



*With over 15 years of experience in wood-based solutions and production, Jose Matas joined Tomra Recycling as segment manager in 2021 to advance the material recycling and circularity of waste wood for the panelboard industry. His international experience with some of the world's largest wood-based producers offers insights into the challenges and future of the industry.*

**W**ood is becoming an increasingly desirable commodity, especially in times when the market finds itself under extreme pressure due to supply chain shortages and high prices.

In only a couple of months, two developments have been influencing the status quo of the sector. On the one hand, there is no place in the world where the impacts of climate change have not become evident. Whether it is extreme heat, large-scale floods or wildfires, climate change is quickening its pace. On the other hand, energy prices in Europe are on the rise and winter ahead could lead to sky-high power bills. In this article, we will look at how both the energy crisis in Europe and the weather extremes impact the wood industry and how transitioning to a

circular economy can help overcome these challenges.

## **EUROPEAN ENERGY CRISIS**

The current energy crisis, with gas prices at record highs, has a major impact on the wood sector. Households now tend to turn to conventional heating methods such as wood-burning stoves. In Germany, for instance, where almost 50% of homes are heated with gas, people started to stockpile wood for fear of gas shortages<sup>1</sup>. For centuries, wood has been a reliable and affordable source of energy. To date, 50 million homes in Europe use energy recovered from biomass<sup>2</sup>. With the aim to create sustainable energy systems and limit resource scarcity, renewable energy sources like biomass will only continue to grow<sup>3</sup>.

# REVOLUTION IN DOOR INDUSTRY

# TESA HDHMR DOOR

## AVAILABLE IN

### LENGTH (FEET)

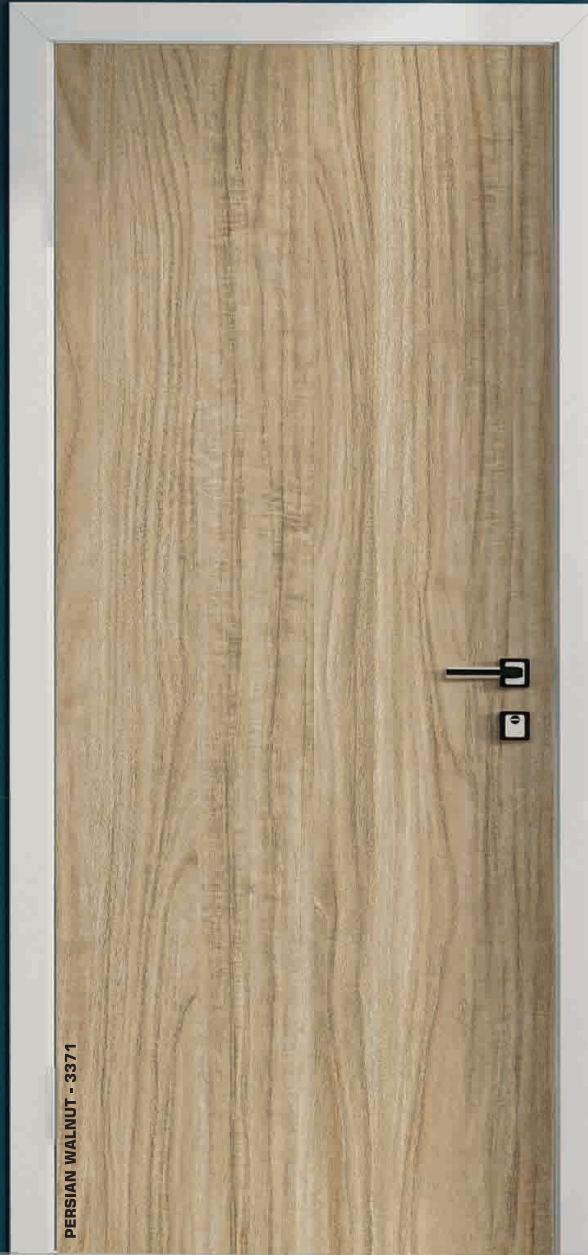
6.5, 6.75, 7 & 8

### WIDTH (INCH)

27, 30, 33, 36, 39,  
42 & 45

### THICKNESS

30MM, 32MM & 35MM



- Ready To Use Doors
- Best Finishing, Unique and Rich Look
- Solid Structure, No Core Gap
- Smooth Surface, Zero Bubble Finish
- All Season Product & Dimensionally Stable
- Cost Effective
- Easy Locking System

PERSIAN WALNUT - 3371

 <b>HIGHER DENSITY</b>	 <b>TOUGHER THAN PLYWOOD</b>	 <b>NOMINAL COST</b>	 <b>HIGHLY WATER RESISTANCE</b>	 <b>BORER RESISTANCE</b>	 <b>MULTIDIMENSIONAL BONDING TECHNOLOGY</b>	 <b>HIGHER SCREW HOLDING STRENGTH IN CORE</b>	 <b>ZERO BUBBLE FINISH</b>	 <b>IDEAL ROUTABLE SUBSTRATE</b>
-------------------------------------------------------------------------------------------------------------	--------------------------------------------------------------------------------------------------------------------	------------------------------------------------------------------------------------------------------------	-----------------------------------------------------------------------------------------------------------------------	----------------------------------------------------------------------------------------------------------------	-----------------------------------------------------------------------------------------------------------------------------------	---------------------------------------------------------------------------------------------------------------------------------------	--------------------------------------------------------------------------------------------------------------------	--------------------------------------------------------------------------------------------------------------------------



**BALAJI ACTION BUILDWELL:**

**Customer Care Service:** 011-41120018, 41120098

cce2@actiontesa.com, cce3@actiontesa.com

**PRODUCT RANGE :** •Pre-Laminated & Plain Particle Board, MDF & HDHMR Board  
•HDHMR Door •HDF Laminated Flooring •Embossed HDF Board •UV Coated Board  
•High Gloss Acrylic Board •Door Skins



**CLIMATE CHANGE**

It has been decades since people heard about the urgency to combat climate change and little has happened to mitigate its effects. This year, maybe more than ever before, we are experiencing the devastating aftermaths of climate change. Extreme weather has significantly impacted forests and thereby the condition and availability of wood. Canada, which covers about one quarter of the wood demand in the US, is suffering from severe drought and wildfires that disrupt the supply chain<sup>4</sup>. At the same time, drought leads to insect infestations that affect the condition of wood and, thereby, potentially the quality of the woodbased products.

**LACK OF WOOD**

A variety of industrial and consumer products consists of wood, and the furniture industry is producing wood-based panels on a large scale to meet growing consumer demands. Unfortunately, wood has turned into a product that no longer grows on trees since its demand has long exceeded the volume Earth can naturally provide<sup>5</sup>. The lack of supply has only recently been exacerbated by the climate emergency and the European energy crisis, as well as the ongoing war between Russia and Ukraine. With the start of the war, the EU decided to stop imports including wood and wood-based products from both Russia and Belarus. This entails a gap of approximately 4.5 million cubic metres of sawn lumber annually<sup>6</sup>. As a consequence, the wood-based panel industry is exposed to challenges in sourcing enough raw material that is still suitable to be processed into superior quality products.

**PRICING TRENDS**

Current lumber prices are a reflection of the scope of the sector’s challenges. In Bulgaria, for instance, where the use of wood-burning stoves is common, firewood prices have doubled, reaching up to €150/cubic metre<sup>7</sup>. In Germany, prices for wood and pellets have multiplied by 2.5, and pellet production plants can hardly keep pace in producing enough saleable material<sup>8</sup>. In the US, lumber prices outperformed those of gold and bitcoins and wood is expected to become the most desirable commodity<sup>9</sup>.

The price for non-processed wood chips for instance shot up by 450% within the last year. In 2021, collectors had to pay for disposing of hazardous waste wood but today some licensed facilities are even rewarding waste collectors for the material. Given the recent challenges, prices are predicted to increase even more mid-to-long term.

Such trends can be turned into opportunities and incentivises us to change the way we treat and manage our resources.

**RECYCLING ENABLES ACCESS TO MATERIAL**

When energy-intense primary production is hampered by material shortage and unprecedented prices, manufacturers must find ways to access materials to secure profits. An environmentally friendly and economically viable solution is the reuse of recyclable materials. Until recently, most wood has been downcycled rather than being turned into recycled content that features virgin-like qualities and is applicable for the manufacture of higher-grade applications<sup>10</sup>. If we kept wood-based panels in a closed loop, we can bridge the gap between supply and demand and contribute to meeting sustainability targets.



**WOOD IS CIRCULAR BY NATURE**

Wood is a circular material and trees are a best-practice example of renewability: It all starts with a small seed that is planted and nurtured by nutrients found in the soil, and the tree starts growing. During the tree’s lifecycle, it uses nutrients from the soil to produce oxygen with its leaves. During autumn, the leaves fall, are absorbed by the soil, and provide nutrients for the next generation of trees. As this example shows us, trees are circular by nature from the beginning to their end of life. Given the recent developments and the industry’s aim to make its processes more sustainable, it is time to also apply the concept of circularity to the end-of-life cycle of trees.

**ENABLING A CIRCULAR ECONOMY FOR WOOD**

To date, huge volumes of wood end up in landfill instead of being recycled and processed into new products. Stepping away from linear production and consumption towards a circular model would enable the industry to alleviate supply shortages and prices and save valuable resources. To get there, we must introduce a holistic approach that includes the collection, sorting, and recycling of waste wood. While the necessary infrastructure is still in its infancy in many countries, market trends signal that investing in waste wood recycling can be economically advantageous.

Apart from the economic advantages, a circular economy for wood is a promising concept to reduce CO<sub>2</sub> emissions. Production with recycled wood emits less CO<sub>2</sub> than processes with primary materials. For example, 1m<sup>3</sup> of ready-to-market particleboard absorbs 720kg CO<sub>2</sub>, and for mediumdensity fibreboard (MDF), even 820kg<sup>11</sup>.

**TECHNOLOGICAL ADVANCEMENTS**

A circular economy that exploits the full potential of natural resources like wood depends on the advanced cleaning, sorting and recycling of waste wood. Whereas traditional cleaning methods, such as magnets, air and water separators,



**Droughts endanger the condition of vegetation and trees.**

deliver adequate results for smaller plants that do not require high throughput and purity levels, manufacturers looking to increase recycled content require the most advanced sorting technology. A combination of x-ray sorting units to remove inert materials from waste wood and optical sensorbased sorters for further purification enables plant operators to unleash new opportunities. First, they can run high throughputs and reach new purity levels. Second, they can create new revenue streams when upgrading the optical sorter with deep learning technology. Sorting software based on deep learning allows for the detection, analysis and separation of different wood grades and can even recover MDF from a processed waste wood stream.

**WHAT'S NEXT**

In recent years, the industry has undergone considerable change and made progress related to sustainability. Infrastructures to collect, sort, and recycle waste wood have been put in place in countries and regions that have recognised the untapped potential of waste wood. With the market introduction of smart sorting technologies that outperform many conventional methods, recycling has become a promising concept for both the industry and nature. In the future, the wood-based panel industry will increasingly turn to recycled wood to access materials, develop products of higher quality, reduce costs and dependence on material availability, and realise higher yields.

Once holistic approaches are established, we must go beyond closing the loop on particleboards and address circularity for all types of wood-based materials, some of which are still difficult or impossible to recycle. In general, the solution is quite simple: The more wood is kept in use, the more we protect our planet and minimise deforestation, a factor that is propelling climate change. There is still a long way to go, and the imbalance of supply and demand will not disappear overnight, but we will get there if we join forces and remind ourselves of the necessity to maximise resource use and recovery.

Do not forget: wood is good, recycled wood is better.

**References**

1. Deutsche Welle. Germany: Stockpiling wood in fear of gas shortage. <<https://www.dw.com/en/germanystockpiling-wood-in-fear-of-gas-shortage/a-62601419>>
2. The Post. Firewood: The premodern solution to Britain's energy crisis. <<https://unherd.com/thepost/>

firewood-the-premodern-solution-to-britains-energy-crisis/>

3. Renewable Energy Magazine. Biomass market growth promoted by increasing investments in renewable power generation. <<https://www.renewableenergymagazine.com/biomass/biomass-market-growth-promoted-by-increasing-investments-20220627#:~:text=The%20biomass%20electricity%20market%20size,reach%20%2473.33%20billion%20in%202030>>
4. CNBC. Climate change will disrupt supply chains much more than COVID — Here's how businesses can prepare. <<https://www.cnbc.com/2021/08/19/climate-changesupply-chain-disruptions-how-to-prepare.html>>
5. Material Trader. Cascading wood towards the circular economy. <<https://community.materialtrader.com/cascading-wood-towards-the-circular-economy/>>
6. Metsä Group. Price of sawn timber settling at a new normal. <<https://www.metsagroup.com/metsafibre/news-and-publications/news-and-releases/stories/2022/price-of-sawn-timber-settling-at-a-new-normal/>>
7. Euractiv. Firewood prices, shortages spell cold winter for Europe's poorest. <<https://www.euractiv.com/section/energy-environment/news/firewood-prices-shortagespell-cold-winter-for-europes-poorest/>>
8. Deutsche Welle. Germany: Stockpiling wood in fear of gas shortage. <<https://www.dw.com/en/germanystockpiling-wood-in-fear-of-gas-shortage/a-62601419>>
9. The Atlantic. Lumber prices are off the rails again. Blame climate change. <<https://www.theatlantic.com/science/archive/2022/01/why-climate-change-pushing-lumber-prices/621288/>>
10. Material Trader. Cascading wood towards the circular economy. <<https://community.materialtrader.com/cascading-wood-towards-the-circular-economy/>>
11. ResearchGate. Carbon shortage in wood products. <[https://www.researchgate.net/publication/320375411\\_Carbon\\_storage\\_in\\_wood\\_products#pf5](https://www.researchgate.net/publication/320375411_Carbon_storage_in_wood_products#pf5)>. (Source: Panels & Furniture Asia). □

**Indian Wood & Allied Panels**  
*A Quarterly Publication on Plywood / Wood & Bamboo Based Panel Products*

**READ!**

**SUBSCRIBE!**

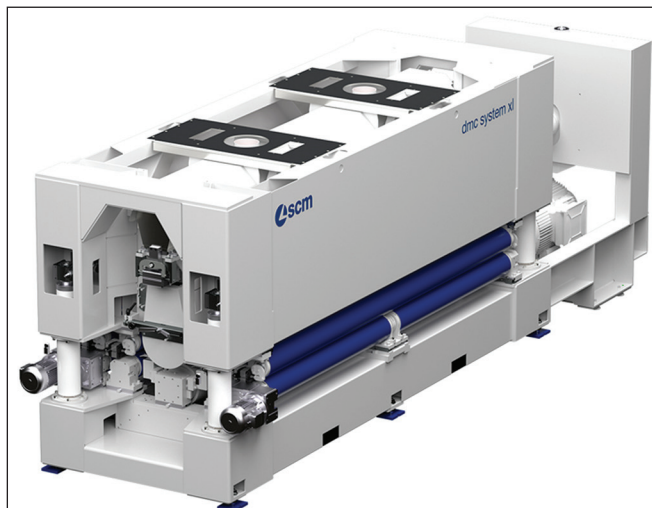
**ADVERTISE!**

For more details:  
 Tel.: +91-9891788269, +91-11-25755649  
 E-mail: [fippi@fippi.org](mailto:fippi@fippi.org)

# SCM at the 26th International Timber Construction Forum (IHF)

The 26th edition of “Forum Holzbau” is the most important global event in timber construction, held at the Congress Centrum in Innsbruck from November 30 to December 2.

SCM will also be taking part in this edition together with the most important players in the production line (architects and designers, machinery suppliers and builders) to present its latest products for the industry. Deep-rooted technologies that, together with the SCM team’s exclusive skills, are empowered by the seventy years of experience acquired by the Italian group in developing and producing advanced, and flexible solutions for wood machining.



The area and oikos CNC machining-centre ranges are an example of this as they are continually improved with new specific models for the production of timber construction components, and the launch of a completely new entry in terms of finishing: dmc system xl, an automatic sanding-calibrating machine specifically designed for machining X-lam/CLT panels and walls. Another equally clear example is the trade partnership forged with the Swedish company, Randek AB - another key player at Forum Holzbau - to supply the widest range of solutions for beams, walls, frame walls and X-lam/CLT panels at international level.

## WHAT'S NEW FROM SCM AT FORUM HOLZBAU

### AREA X

At the Forum in Innsbruck, together with the SCM team, you will have a chance to examine the specifics of the area x, the new 5-axis CNC machining centre with mobile gantry-type structure for SMEs in the timber construction industry.

The key advantages of this new model include exceptional machining quality and maximum reliability that allow for finished elements to be produced, ready for assembly at the work site, as well as completely eliminating down times caused by any problems. Area x positions itself at the centre of the SCM 5-axes cnc machining centre range with a mobile gantry-type structure and PRO worktable dedicated to the production of X-lam/CLT



panels for walls and flooring as well as curved beams. This solution allows you to machine elements of up to 3,600 mm in width and 360 mm thick, while the length can reach up to 36 metres.

The PRO version worktable is the key feature of this new model. The high level of configurability comes from the availability of five different bases (from 16,000 to 36,000 mm) that can be fitted with automatic systems for reference and piece locking, together with innovative systems for cleaning the work area.

AREA X can have a simpler worktable for a stand-alone version or a more complete one for a version that can integrate into automatic production lines.

The 30-kW working unit guarantees excellent performance even under severe working conditions and is supported by a specific suction system for completely dust-free operations.

The tool magazine can hold up to 15 tools and/or special supplementary ones to cover all possible machining work: squaring, end stop milling, slots, drilling, nesting cut, creation of sharp edges, laps and notches.

Area X, as is the case with all SCM cnc machining centres for the timber construction, is fitted with Maestro beam & wall, the software that allows you to program and control the entire workflow easily and quickly. Furthermore, the operator’s work is made easier by the use of a double eye-M console for both the Maestro beam & wall software and a video surveillance system connected to four HR cameras for complete control of the production process in real time.

### DMC SYSTEM XL: NEW HORIZONS FOR SANDING X-LAM/CLT PANELS

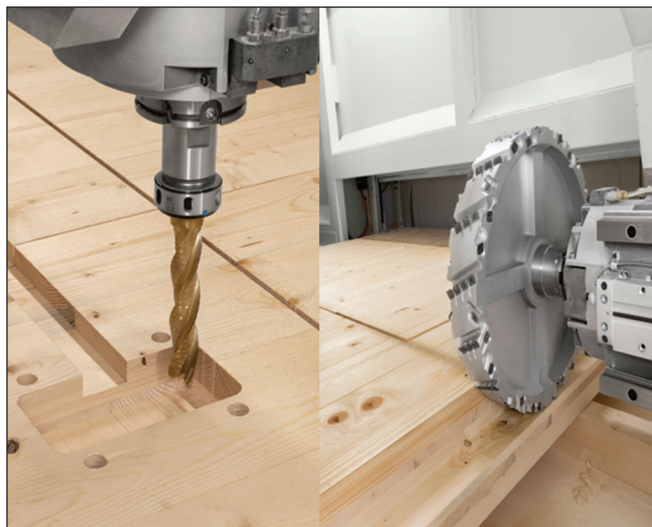
SCM extends its many years of experience in sanding to the timber construction sector with a new project dedicated to machining X-lam/CLT panels.

Dmc system xl, is a solid, reliable and highly technological solution that offers configuration versatility and unification of the components and parts in common to optimise management costs.

This new solution involves a solid steel structure capable of machining the upper side of the panels up to 3700 mm wide and 500 mm thick. Its strength is the modularity that for decades has been one of the most popular advantages of the range for dmc sanding.

At this initial stage, three modules have been developed (roller unit, pad unit and transversal unit) that can be combined with one another based on specific production needs. Furthermore, at a later date, the customer will be able to add additional units to the selected configuration, achieving an efficient and coherent integration between the machines, controls and electrical panels.

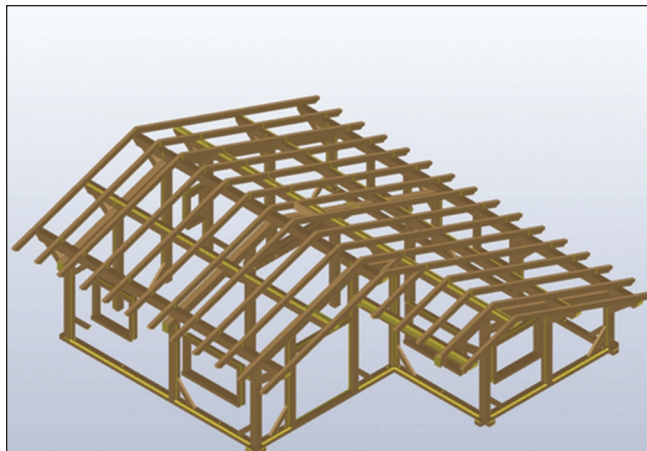
At the planning stage, top quality materials and components have been selected that have been designed to last long and support the most intense machining work. Furthermore, the heart of the dmc system xl technology was developed to make the operator's maintenance work easy, fast and always safe.



SCM's approach to X-lam/CLT sanding is to help customers distinguish themselves on the market with solutions aimed at improving the surface finish and increase the value of the finished product.

MAESTRO BEAM & WALL NOW IN ITS NEW 3.0 VERSION SCM will also present the latest 3.0 version of its Maestro beam & wall software at Forum Holzbau, designed to machine structural elements and, more specifically: roofs, structural beams and columns, wall panels and flooring, solid wood beams including round ones, blockhaus, curved blackboard beams and insulating panels.

As well as offering all the advantages of a proprietary software, entirely developed by those who understand both how



the machine works and the machining process, Maestro beam & wall stems from years of experience in the field and continuous collaboration with customers, to find the best solution for demands to optimise the workflow and a better production flexibility. The new 3.0 software version features a fully updated graphic programming interface and is aligned with the design CAD systems used by architects.

Furthermore, Maestro beam & wall 3.0 is enhanced with new functions:

- “Advanced” nesting function for machining beams and panels that tells you in advance the amount of material needed to complete the project and achieve an increasingly more significant reduction in waste.
- 2D freehand drawing function to create particular shapes not included in the macro standards of the BTL language.

The most recent feature is the option of using Maestro beam & wall both on PCs in the office and on the eye-M operator console, that is, directly on board the machine even at the programming stage, an important advantage for companies that rely on flexibility of use to increase their productivity.

Scm Group is a global leader in technologies for machining a wide range of materials and industrial components. Across the globe, the group's companies act as highly reliable partners to leading industries in a wide range of product sectors, from furniture to construction, automotive to aerospace, and yachting to plastic machining.

Scm Group coordinates, supports and develops a system of industrial excellence in 3 large highly specialised production centres in Italy, with a turnover in excess of 750 million Euro, with 4,000 employees and a direct presence in all 5 continents. □

*Readers are invited to send views, comments and suggestions if any, addressed to Editorial board  
We also invite your valuable Advertisement and Article to be published in the Journal.*

## “INDIAN WOOD & ALLIED PANELS” Quarterly Journal - FIPPI

404, Vikrant Tower, 4, Rajendra Place, New Delhi-110008, India  
Tel.: +91-11-25755649 (Direct), 25862301, Fax:+91-11-25768639  
E-mail: [fippi@fippi.org](mailto:fippi@fippi.org), Website: [www.fippi.org](http://www.fippi.org)

# The future of plywood in India is very bright: Duroply Industries



**D**uroply Industries is India's one of the leading brands in plywood manufacturing well recognized for its deep-dive innovation, unmatched craftsmanship & unparalleled customer service. DURO product range comprises Plywood, Block Boards, Doors, and Veneers. DURO believes in sustainability and environmentally friendly techniques and processes for wood materials.

**In the September 2022 quarter, Duroply Industries reported a standalone net profit of Rs. 1.19 crore. What are your top priorities right now for the growth of the company?**

The last few years have been very challenging, especially due to the COVID-induced lockdowns that significantly hampered business operations. In the current financial year, we have seen a significant uptick in business, boosted by strong demand growth and our sustainable and subsequent return of the company to profitability. Our focus remains on growing our business footprint across India along with improvements in business operations that result in better profits.

**What are your business plans for the next five years in terms of the Indian market, the cities you aim to enter, and the markets you wish to penetrate?**

The future of plywood in India is very bright. To put things in perspective, our population is nearly at par with China's, but for every 1 unit of plywood consumed in India, 20 units are consumed in China. India's rapid interior infrastructure growth has only begun, and we are keen on playing a major role in this transformation.

As one of the oldest brands in the plywood segment, we have a pan-Indian presence, with our products being sold in more than 25 states. Our overall penetration is the highest in North India, and over the next few years, we will be looking to further grow our presence in the South, West, and East of India.

**Can you give us an overview of your various product portfolios? Which products have been and are still particularly successful for Duroply? What has been the market response to them?**

Our product portfolio includes plywood, block boards, flush doors, and decorative veneers. All these products in various categories have been extremely successful. They all form part

of a strong basket of solutions for anyone looking at long-lasting woodwork or interiors.

**What are the industries/segments in which you work? Where do you believe the biggest demand exists? What will be the next steps for expansion?**

We have primarily been focused on the higher-end segment of the industry. However, with the growing population and demand, we have also started focusing on the mid-segment product. It is our belief that the aspiration of having high-quality woodwork interiors is no longer a dream just for the elite but something that every member of our society now aspires to have.

**What challenges do you foresee the company and the wood panel sector as a whole to face going forward?**

The negativity that plywood is a wood-based product and, hence, must not be eco-friendly is a complete myth. Plywood is one of the most eco-friendly solutions that we have. Today, in India, over 90% of the wood sourced for plywood is sourced from sustainable plantations. Keep in mind that wood as a resource only requires sun, water, soil, and time to grow. Short plantation timbers today require only 8–10 years and form a very sustainable form of income for farmers. Consider the other alternative products that are available for interiors and their impact on the environment and then you realise that plywood is one of the most sustainable and durable options out there.

**What impact has the COVID-19 pandemic had on the industry? How did it impact revenues and business operations, and are sales and the supply chain operating normally again?**

Plywood distribution in India is highly dependent on trade. With these and other disruptions, we saw retail trade come to a virtual halt in 2020 as well as in 2021. This had significant impact on business during the impacted times which saw minimal lifting of material.

But with god's grace, we are not only back to pre-pandemic level of business, but the Industry is seeing an overall strong growth. At Duroply, we have become one of the fastest-growing plywood brands and look forward to continuing this momentum for years to come.

**There is a huge gap between the demand and supply. What strategies do you employ to address supply chain and logistical issues in wooden industry?**

We have a robust supply chain and logistics network to ensure that our products are there on time across all centres, from our factory to the frontlines. We follow a hub-and-spoke model where we have carefully chosen, logistically connected centres acting as hubs. Adopting suitable forecasting tools, we keep sufficient stock of various brands and products at these nodal centres and feed our frontline sales team from there to ensure that our customers get their desired product in time.

*Interview Attributes: Akhilesh Chitlangia, Executive Director and Chief Operating Officer, Duroply Industries Limited. □*

## Ministry of Agriculture and Farmers Welfare

### Plant Quarantine (Regulation of Import into India)

Attached please find Notification dated 13/10/2022 from Ministry of Agriculture & Farmers Welfare (Department of Agriculture and Farmers Welfare) notifying that in case of consignments requiring pre-shipment fumigation with Mbr. Originating from countries which has phased out the use of Mbr for quarantine and pre-shipment purposes, the consignment shall be released after charging the normal inspection fee.

Federation of Indian Plywood & Panel Industry had taken up this issue and has been representing this issue to the Ministry of Agriculture & Cooperation for a very long time and after much persuasion the five times penalty which they use to charge has been removed and now we have to pay normal fee.

#### MINISTRY OF AGRICULTURE AND FARMERS WELFARE (Department of Agriculture and Farmers Welfare)

#### NOTIFICATION

New Delhi, the 13th October, 2022

**S.O. 4871(E)-** In exercise of the powers conferred by sub-section (1) of section 3 of the Destructive Insects and Pests Act, 1914 (2 of 1914), the Central Government hereby make the following Order further to amend the Plant Quarantine (Regulation of Import into India) Order, 2003, Namely:-

1. **Short title and Commencement-** (1) This Order may be called the Plant Quarantine (Regulation of Import into India) (Fifth Amendment) Order, 2022.
- (2) It shall come into force on the date of its publication in the Official Gazette.
  2. In Chapter II of Plant Quarantine (Regulation of Import into India) Order, 2003, after the existing entries relating to Clause 5 the following entries, will be added namely:-
    - (ii) *In case of consignments requiring pre-shipment fumigation with MBr originating from countries which have phased out the use of MBr for quarantine and pre-shipment purposes, the consignment shall be released after charging the normal inspection fee. The NPPO of the country will be required to submit relevant documents to NPPO India to establish phased out country status. NPPO India would notify the list, which would be updated regularly based on the information received.*

[F.No.8-34/2021-PP.II]

PRAMOD KUMAR MEHERDA, Jt. Secy. □

## CenturyPly mulls particle board unit in TN at an investment of ₹550 crore

*Century Plyboards has procured about 30 acres of land in Chennai to set up a new unit for manufacturing*



Keshav Bhajanka, Executive Director, CenturyPly

Century Plyboards (India) Ltd plans to set up a new unit for manufacturing particle board in Tamil Nadu at an estimated investment of around ₹550 crore. It is looking to add 3,60,000 cubic metres (CBM) per annum capacity by FY25. Its existing capacity for particle board is close to 75,000 CBM per annum and the capacity utilisation for the year ended March 2022 was at 97 per cent. According to Keshav Bhajanka, Executive Director, CenturyPly, the company has procured about 30 acres of land in Chennai for setting up the unit.

“We had decided to come up with a particle board unit in UP long time ago. However, it could not move ahead with the plan due to some licensing issues but that has now been cleared. So we are just seeing whether to set up the plant in UP or Tamil Nadu. We are hopeful of firming up our plans by the end of this fiscal,” Bhajanka

#### Rise in demand

The increasing demand for particle board and limited capacity of the existing plant and proximity to principal source of raw material are some of the key reasons for coming up with a new plant, the company said in a notification to stock exchanges.

The company, which is looking to triple its MDF (medium density fiberboard) capacity to 1,800 cu.mt from the current 600 cu.mt per day, is looking to invest close to ₹900 crore over the next three years till FY25 in both brownfield and greenfield projects. Work on brownfield MDF expansion at Hoshiarpur is in full swing and is likely to come on stream by the end of this month. Its upcoming greenfield MDF project at Andhra Pradesh is also likely to commission by the second half of FY24. The greenfield project for laminate project in Andhra Pradesh is also expected to come on stream in Q2FY24. □

## Duroply Industries reports standalone net profit of ₹ 1.19 crore in the September 2022 quarter



Sales rise 63.07% to Rs 75.16 crore

**D**uroply Industries Limited, India's most experienced plywood manufacturer amongst the leading players, has reported a turnaround in its profitability. The Company has reported a profit after tax of Rs. 1.06 crore for the quarter ended June 30, 2022, against a loss of Rs. 2.27 crore during Q1 FY22 and a loss of Rs. 3.59 crore during Q4 FY22. Company has recorded a healthy 102.76% growth in sales to Rs. 71.22 crore during Q1 FY23, from Rs. 35.12 crore sales in the same quarter last fiscal year and has shown an impressive 30.36% growth over Q4 FY22 sales of Rs. 54.63 crore.

Net profit of Duroply Industries reported to Rs 1.19 crore in the quarter ended September 2022 as against net loss of Rs 1.21 crore during the previous quarter ended September 2021. Sales rose 63.07% to Rs 75.16 crore in the quarter ended September 2022 as against Rs 46.09 crore during the previous quarter ended September 2021.

Commenting on the results, Mr. Akhilesh Chitlangia, Executive Director and Chief Operating Officer, Duroply, said, "Being the most experienced plywood player in the Indian market, Duroply is effectively riding the real estate and resulting interior boom India is seeing, resulting in a turnaround in its profitability. Our Q1 FY23 results demonstrate our understanding of the market place. We will continue to focus on providing premium quality plywood to our esteemed customers to ensure durability of interior works of Indian houses."

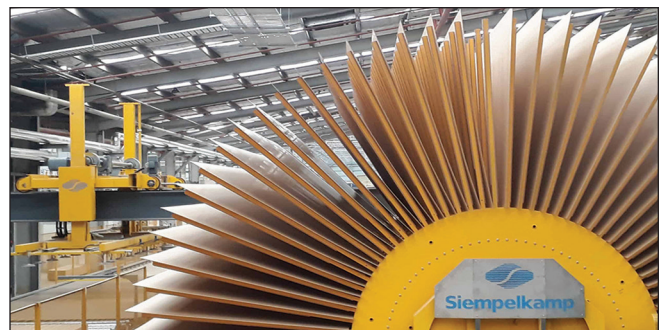
The Board of Directors of Duroply this month authorised the issuing of up to 10.33 lakh equity shares by preferential issue to the promoters and 25 investors, as well as 11.91 lakh warrants to the promoters. 28.03 crores in total have been raised through stock shares and warrants.

More than 1,000 educational kits from Duroply have lately been given to children of carpenters who are returning to school after Covid. Duroply launched the charitable social campaign "Aao School Chale Hum" in an effort to encourage these kids to prioritise their education. Children from lower income groups in our society have benefited from this initiative, which has been implemented across the country of India. The launch of this initiative coincided perfectly with the start of the new school year. The aim was to ensure that the parents of these children received support in providing relevant stationary to their children especially at a time of high inflation. As a result, the kit will be fully utilised by the children over the coming years. □

## Thin board MDF plant by Siempelkamp fulfilled for Borg Manufacturing

**T**he fourth Siempelkamp medium-density fibreboard (MDF) production line has been supplied to Borg Manufacturing, an Australian wood-based panel producer. In 1987 and 1995, the first two MDF plants at the Oberon, New South Wales, Australian location were ordered from Siempelkamp. In 2017, this was supplemented by a plant for the production of particleboard. In 2019, Borg Manufacturing placed an order for a MDF thin board plant with a ContiRoll in the 8ft × 18.8m format, with the order successfully fulfilled in October 2022.

The plant produces boards in a thickness range from 1-25mm. In particular, the production of the 1mm thin board was a unique challenge for the commissioning team, as explained by Stefan Wolff, the project manager: "For us this is a special success, considering that, in addition to the technological challenge, the COVID entry restrictions also influenced the work of our project team."



The finished production line at Oberon location site (Image: Siempelkamp).

"We are pleased that the work with our customer's team in particular could be conducted in such a result-oriented and constructive manner regardless of this." □

## Amulya Mica organised its first Dealers meet at Varanasi on 16 December 2022



**W**ith the view to expand its network in Purbanchal area, Amulya Mica had organized its first Dealers Meet at Hotel The Amayaa, Varanasi on 16th Dec/2022. The function was inaugurated by lighting the lamp followed by Ganesh Vandana & National Anthem.

The company's Product Head-WPC Mr. Sourav Pande, Sr. Manager Purbanchal Mr. Anindo Bose, Mr. Umakant Upadhyay company's distributor of Varanasi M/s Puja Traders & entire team of Purbanchal Mr. Shishir Srivastav, Mr. Asish Tripathi and Mr. Vivek Pal had welcomed more than 100 dealers which came from Varanasi city & adjoining areas of Varanasi. Mr. Abhishek Agarwal, Amulya Mica's Director in Board, himself was present to greet the dignitaries. Mr. Abhishek Agarwal, son of MD Mr. Rakesh Agarwal, completed his graduation degree from Nottingham University, U.K and management degree from IIM, Kozhikode. After completing his study, he joined with father's business. At present, he is looking after Production of both the company Laminates & WPC/PVC plant, along with working on automation and expanding company's export.

Mr. Anindo Bose had briefed about Amulya Mica profile and its Pan India network & abroad. That company is manufacturing Plywood, Laminates, WPC/PVC Board & Frame, Cladding &

Flush Door, all products require for furniture making. He also spoke for company's premium product like Seven Wonder , Synchronised Laminates and its USP what it makes different from others. Mr. Sourav Pande briefed about Amulya WPC all products detail, its rainbow series, Frame and 900 bendable PVC laminates and its features. Also shown presentation.

In his speech, company's director Mr. Abhishek Agarwal thanked all dignitaries to attend the event and briefed company's journey, its quality product & services, its award & accolades and CSR. Its plantation drive that planted 1 lac trees in the different places of India and continue. He evoked everyone to join with this drive with Amulya Mica for good cause. He focused also on the proposed ERP and future endeavours of the organisation. He assured to provide always good quality products and sales service. Amulya always worked toward customer centric approach & ethical business practice and always strive for innovative products.

All the present dignitaries appreciated the way & style of Amulya Mica.

The event was winded up with GALA DINNER, product showcase and finally the VOTE OF THANKS. Local print and visual media also took part which was later talk of the town. □

# Canadian wood turns the spotlight on a new espresso bar in Jaipur

*A project by Park Hospitality, The brand decides that their future restaurant projects in India will use these Canadian wood species*



In ancient India, wood was the most popular medium for making sculptures, carvings, and for architecture. Wood is still favoured on a regular basis today. However, interior designers and architects have begun to include softwood species in their designs in an effort to modernise appearances. Additionally, designers are moving away from traditionally used hardwood species, which are currently more challenging to acquire because of their high demand and ever depleting hardwood supply in the world, in favour of certified and sustainable materials for their projects.

Yellow cedar, a softwood species from British Columbia, Canada, was recently used in the interior finishings of a coffee shop project in Jaipur thanks to FII India's collaboration with The Town Coffee Gourmet Espresso Bar project features Yellow cedar in furniture, window frames, panelling, doors, and door frames, among other interior applications.

Rajeev Singh, the designer for the project has a passion for hospitality and was aware that the interior design of the retail establishment would be essential to a holistic client experience. Town Coffee Gourmet Espresso Bar was his first project, which is a testament to his expertise in retail design thanks to its opulent décor. It makes sense that his first location was a major draw for young people looking for a place to hang out and unwind at Jaipur's first themed coffee shop.

It is important for a retail establishment to provide a positive client experience in the current era of "experiential purchase." The interior layout of a retail establishment can have a big impact on how customers behave and feel. It is an elusive yet very important prerequisite. When developing the project, the designer was hunting for wood with a light, smooth finish that would go well with the shop's dark interior walls. When he went to the showroom of the nearby stockist, Tambi Timbers,

FII India gave him a technical rundown of the available goods and showed him a selection of B.C. species. FII was consulted before finally deciding on yellow cedar for the project because of its strength and aesthetic qualities.

The project had a very successful outcome. Park Hospitality was so happy with the aesthetic and performance of the project that they plan to use the yellow cedar in other projects in the future.

Nowadays, sustainable materials are preferred for projects by architects, designers, and clients alike. This fact fits nicely with the use of Canadian wood for a variety of purposes. Designers and woodworking professionals find it to be the best option because of its additional benefits, like being seasoned, certified, and ready-for-use wood.

In India's hospitality industry, the use of yellow cedar in Town Coffee Gourmet Espresso Bar serves as an excellent showcase for British Columbian species, and it has proven to forge significant relationships with local developers keen to use British Columbian species in upcoming projects.



When Park Hospitality decides to open new locations in India in the future, all of their restaurants under the same name will use Canadian wood species. Additionally, the designer is keen on using Canadian wood species again for his projects because it has already been tried and tested, and they are pleased with the results, as they are also working on many other restaurants.

The two eateries are situated in well-known areas in Jaipur. There are many millennial clients that go there to hang out with their friends and families. Both locations have distinctive woodwork. It stimulates them to come up with fresher concepts. □

## Greenply Introduces (E-0) Program On Health & Wellbeing For Carpenters



**G**reenply believes that the contractors' and the carpenters' community are an integral part of this industry, and it has undertaken various initiatives towards the betterment of the community by recognizing their relentless contribution in this sector.

The E-0 product innovation of Greenply is also largely directed toward the health and well-being of carpenters and contractors. As they spent most of their time with plywood during its application for interiors, the community is mostly exposed to harmful emission gases from the material and is prone to various health hazards. The zero-emission plywood (E-0) provides safety to the community by reducing formaldehyde emissions to zero. The E-0 innovation has reached over 1 million households and Greenply continues to build on the awareness amongst its stakeholder through multiple touch points. As an effort towards environmental sustainability, Greenply has successfully acquired the FSC® – FM (Forest Management) Certification from Forest Stewardship Council (FSC®) for its plantations in Tizit, Nagaland. This certification addresses maintaining ecological harmony and provides an assurance to consumers that the products they purchase are sourced sustainably.

Greenply strives to make a difference in the lives of the

contractor community through the implementation of various CSR programs that have helped make positive impacts mainly in the areas of healthcare, education, and social relief. Greenply has been a consistent advocate for the health and well-being of its partners and conducts regular health screenings and eye examination camps. The health check-up camps include height, weight, blood pressure and sugar detection. Special focus is also given to the respiratory system during the health screenings. The camps also provide overall health tips from registered medical practitioners and healthy food kits to all invitees. In this year, around 600 people have benefited from the health camps and Greenply targets to provide health facilities to around 1500 carpenter/contractor communities.

For the safety of its employees, Greenply offers its contractor partners accident insurance coverage of INR 4 lakhs through leading insurance partners. This is one of the largest social welfare schemes offered in the wood panel sector for the contractor community. In addition, the Mobile Medical Van (MMV) is equipped to offer diagnostic, medicinal, curative, referral, and counseling services to rural carpenters and contractors. Greenply has also made a considerable additional contribution to the Friends of Tribals Society (FTSEkal)'s Abhiyan movement, which supports the education of tribal and rural children.

Speaking about the initiative, Sanidhya Mittal, Joint Managing Director, Greenply Industries, said, "At Greenply, we've always believed in sustainable growth and valued those who make it possible. We believe it is our responsibility to provide opportunities and support to the carpenters and contractors affiliated with Greenply throughout India so that they may continue to strive and advance. Bringing attention to the contributions of the carpenter community and their hard work by providing them with medical, educational, and other support is consistent with our core values of care and inclusive growth." □

**FEDERATION OF INDIAN PLYWOOD AND PANEL INDUSTRY**

**WISHES ALL MEMBERS, ADVERTISORS, READERS AND  
SUBSCRIBERS;**

**HAPPY NEW YEAR 2023**

**A YEAR FILLED WITH HAPPINESS, SUCCESSFUL BUSINESS &  
PROSPERITY**

# Spot the difference



The bioeconomy includes forestry. PHOTO: STEF KAISER

The BioComposite Centre’s Dr Morwenna Spear explains the differences between the bioeconomy and the circular economy and how the wood-based panels industry fits both. Our world is increasingly interested in green growth, whether this is individual governments setting targets or blocks of nations such as the EU setting out their Green Deal. This mirrors our increasing awareness of the finite nature of resources, and the urgent need to reduce industrial emissions, cut down waste and solve a multitude of sustainability challenges.

Two pillars are often mentioned in connection with green growth – the circular economy and the bioeconomy. Both offer great opportunities to address some of the issues named above. But both are distinct, and may work in different ways. Let’s consider how the wood panels industry fits both.

First the bioeconomy. This ranges from agricultural production through to biotechnology, and includes forestry and fishing. It also covers many tiers of supply chains between the initial grower and the final manufacturing technologies and value adding stages. This includes food processing, wood products, green chemistry and many others. It is a multi-billion pound industry in the UK alone, due to its vast scope.

By their very nature wood-based panels fall within the bioeconomy – using wood for the strength-giving component of panels. It’s increasingly likely that bio-based resins will become widespread over the next decade, increasing the bio-based content of boards. There is scope for bio-based additives in wood-based panels too – waxes could be plant derived, while fillers and hardeners may already be formed from plant materials. Bark tannins have long contributed to resin cure and ground nut shells or bark can act as fillers in plywood adhesives. The role of wood panels for the bioeconomy, and thus how the industry supports a national or global shift towards bio-based materials across society is an important message.

Next the circular economy. Here there is a desire to close the loop, to reclaim products at the end of their service life and return them for recycling. Of course the waste hierarchy doesn’t just mean recycling, with a preference for re-use and repair, but can also go as far as processes where smaller elements (even down to the molecular level) can be retrieved to build new

feedstocks. There is also the collection and use of byproducts, which also reduces waste and can increase the efficiency of the system. A good example is using bark to generate new bio-resins, while the main product, the timber becomes plywood.

Key issues in the circular economy are collection of the end-of-life materials, and establishing supply chains to return them to suitable new manufacture. For wood-based panels many countries have well established wood recycling schemes.

Particleboard has a prominent role in forming the next generation of products from wood wastes. However, issues exist in the uncertainty about the type of panel, what glue, and additives or treatments that it may contain.



Wood waste can be part of the circular economy

Some waste collection and sorting schemes limit the future life of reclaimed products to only certain applications. Other schemes have sought to establish tighter loops, to connect materials of known origin and composition (for example, reclaimed MDF from shops and industry) with technologies to reclaim the components in a more efficient manner (in the example, MDF Recovery’s technology to separate fibres for MDF production). More of these tighter loops are needed.

Sorting and recognition technologies can increase quality control so that feedstocks are better utilised. There is an urgent need to reduce the losses of good wood into low quality uses at end of life (for example, reclaimed wood for biomass energy). A shift to increase labelling and an improved flow of knowledge through the system would boost confidence in the strength or characteristics of reclaimed solid wood.

This could enable reuse in structural applications; formation of new laminated structural products; or conversion of end-of-life plywood into products which harness its inherent strength.

Next time you are discussing the benefits of panel products, remember there are two very strong cases to be made. Wood-based panels already play a leading role in the bioeconomy, and this will continue. The wood panels sector also has a long track record of circularity, and new examples are emerging in which tighter loops can create a greater number of passes through product lives before the wood fibre is ultimately returned to energy and CO<sub>2</sub> to be re-assimilated into new biomass by trees. □

## Plantation Furniture making a comeback with British Colonial Designs in India

With its emphasis on simplicity and minimalism, plantation furniture is making a comeback in the Indian furniture market. Plantation furniture excludes upholstered or cushioned components and has a raw appearance. The Indian household offers a better example of the design method. Dark wood, particularly polished mahogany, is used in plantation-style furniture. The formal Victorian design of the 1800s is strongly ingrained in this plantation furniture, which is also British colonial in inspiration. However, leather, rattan, and bamboo have also had some effect.

Rosewood, Teakwood, Mahogany, Padouk Wood, and even Ebony are some of the common woods used to make furniture. It's not difficult to obtain the popular British colonial furniture and home design style. Color is crucial when it comes to giving your home a colonial feel because light colours and shades keep the interior cool even in tropical temperatures. In order to create an incredible contrast with dark colour colonial furniture, any place with a colonial influence should include light tones of blue, green, cream, and even white. British Colonial style is relaxed, genteel and travelled. It pairs dark-stained rattan, timber and bamboo furniture with pure white linens and an abundance of indoor greenery to cool and refresh the space.

Classic British Colonial design trend began to take shape,



fusing elegant British interiors with exotic furnishings and raw materials from Africa, India, Asia, and the Caribbean. Leather trunks, dark stained teak, mahogany, or bamboo chairs, campaign chests, and folding writing desks & trunks are just a few of the travel-inspired interiors. The soft furnishings, artwork, and panoramic wallpapers are accented with colourful tropical, botanical, animal, and flower prints to give the space a contemporary and chic appearance. □

## FSC: Perhutani pine resin gets Indonesia's first ecolabel certificate



A pine forest managed by Perhutani on the island of Java, where in September 2022 the pine resin commodity won the first FSC ecolabel certificate in Indonesia.

The global non-profit organization Forest Stewardship Council (FSC) stated that the pine resin managed by PT Perhutani won the first ecolabel certificate in Indonesia. "Thus becoming the first forest management unit in Indonesia to obtain FSC certification for pine resin covering an area of 107,667 hectares in September 2022," said FSC Indonesia Marketing and Communication Manager, Indra Setia Dewi in an explanation to ANTARA in Bogor, West Java, Sunday (23/10/2022). He explained that as a plantation forest manager with a long history of operating since 1897, Perhutani realizes the importance of

preserving the forest with the local community.

Recently, Perhutani, which is the manager of a plantation forest in Java, for the production of broadleaf wood, needlewood, pine resin and eucalyptus leaves in Java has expanded the scope of their FSC certification to pine resin. He explained that the total forest area under the management of Perhutani in Java Island is 2.5 million hectares. Meanwhile, the FSC-certified area is 399,000 hectares, covering 10 Forest Management Units (KPH), namely KPH Banten, Ciamis, Kendal, Kebonharjo, Cepu, Randublatung, Madiun, North Banyuwangi, West Banyumas, and Lawu Ds.

With FSC certification, he said, Perhutani has increased the value of its products and increased the income of local people who depend on them as tappers for pine resin. "With today's world pine resin prices, it can be estimated that the economic benefits to the surrounding communities who depend on it are around US\$4 million," he said.

FSC encourages sustainable forest management with non-timber forest products, ranging from rattan, bamboo, rubber, forest mushrooms to latex. Currently, non-timber forest products are used as the main raw material and support for the manufacture of various products needed in daily life, pine resin is a raw material for road markings, paper filler, cosmetic products, oil, and soap. □

## Merino showcases it's HPL (High-Pressure Laminate) based Airport Infrastructure solutions at Indiairport



**M**erino, India's leading manufacturer of high-pressure decorative laminates is elated to be a part of Indiairport which was held during 22nd-24th November in Greater Noida, UP. A first of its kind exhibition and conference in India, "Indiairport" was conceptualized to showcase latest equipments & technologies related to airport infrastructure.

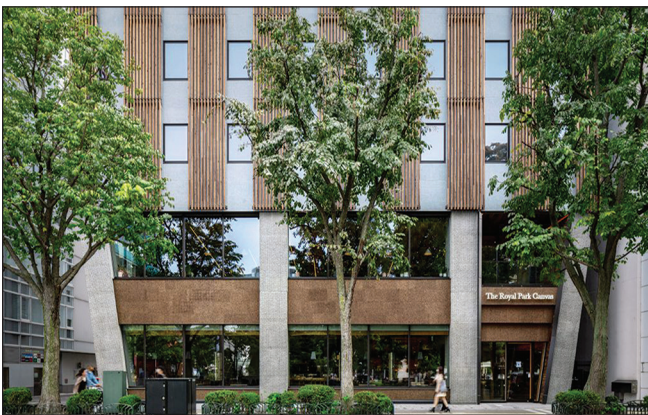
Merino showcased its Control Room consoles at Indiairport exhibition to highlight its expertise in solution based manufacturing along with air traffic control consoles, restroom solutions, furniture for passenger handling areas, food courts, office areas and other zones at airports. The Merino Control

Room consoles have Integrated Technology with Concealed Cable Management, Heat Dissipation Fans and Ergonomic Equipment Storage.

On the successful participation at Indiairport, Mr. Madhusudan Lohia, Promoter Director, Merino Industries Ltd said, "Throughout our journey, Merino has been a part of some of the most prestigious Government projects like the Statue of Unity, Supreme Court of India and various airports across India. Indiairport has served as an ideal platform for us to showcase our solution-oriented product range of Control Room consoles, which has been specifically designed to build & operate in the toughest of environments. The Merino Control Room consoles are designed for a lifetime, low-maintenance and sustainable in nature, thus, becoming compatible for high traffic areas like airports. The strategic movement of manufacturing and developing technologically advanced products for airports has been adopted by the brand as the industry is analyzing having 100 new airports in India by 2024. We look forward to bring-in more such innovative and technologically advanced solutions that merge elegance with performance."

Merino is one of the largest surface solution manufacturers in India having a strong global outreach as well. The brand provides application based solutions such as restrooms, counters, lockers, internal & external wall claddings and many more. Merino is a pioneer in Restroom cubicles having installed 5 lakh plus restrooms across India, till now. □

## Japan's First Hybrid Timber Hotel Completed



**A**rchitecture studio Mitsubishi Jisho Design has completed an 11-storey hybrid timber hotel in Sapporo, Japan, that was designed to use as much local timber and as little concrete as possible. The Royal Park Canvas hotel is located in downtown Sapporo on the island of Hokkaido and was created by Mitsubishi Jisho Design for the real estate firm Mitsubishi Estate Group.

The architects claim that the building is the first hybrid timber high-rise hotel to be built in Japan. It uses a combination of concrete and timber construction methods to achieve the

desired height while fulfilling Japan's strict building standards in relation to earthquakes and fire safety. The tower's basement and the first seven storeys are constructed using reinforced concrete with wood interiors.

The eighth-story hotel features a hybrid structure combining concrete and cross-laminated timber flooring, while the three upper storeys and roof are built entirely from wood. To align with the Royal Park brand's values of sustainability and supporting the local economy, the building mostly uses timber harvested in Hokkaido from mature plantation forests.

"With a concept of 'experience Hokkaido', the hotel features materials made and grown in the prefecture in everything from the building itself to the hotel's management, construction materials to food," said Mitsubishi Jisho Design. "About 80 percent of the wood used for the structure is locally grown, thereby contributing to the local industry," the firm added.

In total, the project uses more than 1,200 cubic mts of lumber, including Sakhalin fir, Japanese larch, Japanese flowering ash, and other wood produced in Hokkaido. According to the architects, the use of wood reduced CO2 emissions during construction by approximately 1,383 tonnes relative to the amount that would have been emitted if reinforced concrete was used for the entire building.

The hotel's facade incorporates vertical heat-treated wooden louvres on the upper floors housing the guest rooms, with carbonised cork used to clad the lower public floors. These materials were chosen to introduce natural tones and textures to the elevations that will change over time.

Wood is also used throughout the interior, including for the formwork in some of the guest rooms, which is left in place and secured with steel reinforcing rods. Remnants from the production of the exterior louvers were salvaged and reused within the interior, including for the feature walls lining the main entrance vestibule. The hotel also aims to contribute to the local community by providing public space that promotes culture. The

second-floor lounge and rooftop are open to the public and are regularly used to host events. Furniture within the guest rooms is also made from local timber. The rooftop is open to the public.

Wood is increasingly being used to build high-rise structures around the world, as timber engineering and construction methods continue evolving. Earlier this year, Danish firm Schmidt Hammer Lassen revealed plans for a 100-meter-tall housing block in Switzerland, which is set to become the world's tallest timber building. Architecture studio Haptic and engineering firm Ramboll have also developed a concept for a modular timber tower that could extend the lifecycle of tall buildings by allowing them to adapt over time. □

## Bamboo hoods brings bamboo back into the spotlight



### What properties does bamboo have that make it suitable for architecture?

**B**amboo has technical qualities that make it appropriate for use in architecture, but it also has qualities that relate to people's emotions and feelings, which is why it is currently used so frequently in this field. Technically speaking, bamboo may grow more than a metre every day and can be harvested without causing any damage to the plant. It is also a very fast-growing natural resource. Its growing rate makes it a very environmentally friendly building material, and in an era of "bigger, better, faster," many people can relate to a building's natural honesty.



Bamboo makes an excellent material for modular structural systems due to its strength and toughness. Bamboo's strength in relation to its weight is analogous to steel's behaviour. And it still looks and feels natural.

### Why is bamboo used by architects these days so frequently?

With all the benefits modern technology brings to architecture, it also brings a lack of awareness of the natural resources. Many people, I believe, yearn for a particular imperfection in things—the kind you find in natural materials—because of the widespread use of computers and the perfection they provide. Another reason why people are drawn towards bamboo these days is that most of us are constantly surrounded by steel and glass. But when we see a building or structure, which is made of bamboo, we think about the natural environment, where it is built and that creates a certain campfire romanticism of being off the grid for a while.

### What is it like working with bamboo compared to other materials?

When compared to other natural materials, bamboo requires a very different approach because it requires modular thinking. Because the culms' diameter is constrained, the joints and how to combine similar elements to form a cohesive system—much like a bird's nest—are given much greater attention. The structure, floor, wall, and cover are all made from the same replicated piece. The building's complexity and how its users interact with it are very honestly depicted by the way the structure remains exposed. As a result, working with bamboo is quite individualised. Not having to worry about the cladding or the colour of the walls has also given us a certain amount of freedom and relief.

### What is the current state of sustainable architecture in terms of efficiency and practicality?

Modern construction methods have advanced significantly in efficiency when compared to earlier ones. Reducing the consumption of fundamental utilities is how efficiency is achieved, and we think that's what modern construction methods concentrate on.

And certainly, it is very doable, and we think that our governing body should make sustainability the standard. It is encouraging to see self-sustaining structures emerge as a result of deliberate design thought experiments. □

## Arunachal Pradesh's 1st Ever Airport Has Gate Built of Bamboo & Cane



STUDIOARO, a sustainable architecture firm, installs a magnificent structure for the first-ever airport at Itanagar, Arunachal Pradesh. With this, STUDIOARO solidifies its position in the eco-friendly architecture space.

The structure, which is the gateway to the airport, is built over a 2,500 sq ft. area in the shape of the Great Hornbill, the state bird of Arunachal Pradesh. It is built entirely of bamboo and cane and has a height of 23 ft and a width of 82 ft. The installation was completed in 5 months and took 15 bamboo artisans to shape.

Regarding the inspiration for the structure, Aroty Panyang, Founder & Principal Architect, of STUDIOARO, says, "As airports represent flight and the first airplanes were inspired by the flight of birds, it was important to consider this aspect in the design of the Donyi Polo airport gate. The structure draws

inspiration from the Great Hornbill, the state bird of Arunachal Pradesh. We studied all the aspects of this charismatic bird - the features, the form, and the flight. Some of the most striking characteristics were the beak and how majestic it is in relation to the size of the body and the bird's great wingspan. These features were incorporated into the design of the gate."

She further added, "The entry gate to the new Donyi Polo airport, built with the themes of bamboo, a material which has a deep tradition and relationship with the region, and the Great Hornbill, the state bird of Arunachal Pradesh, gives a sense of pride to the people of Arunachal Pradesh. It will undoubtedly inspire current and future generations about this great state's cultures and traditions."

Over the past few years, there has been a significant increase in the use of bamboo in modern architecture. Due to the development of new science in the treatment and preservation of this unique material, as well as its structural qualities, the viability of incorporating bamboo in modern structures has been established across the industry.

Also, due to its traits of being a renewable material, it has been increasingly adopted by modern sustainable architects. In fact, some of the most awarded modern sustainable architecture projects are built with bamboo. However, this is a trend that has been dominated by architecture firms primarily in South East Asia and South America.

By building such a landmark structure in India, STUDIOARO has cemented the place of this country's contribution to this emerging movement. Looking forward, Bamboo will surely be one of the most treasured and explored of all building materials, and will continue to make its mark on architecture as a whole. □

## CPCB proposes subsidy for pellet manufacturers to promote green fuel

Central Pollution Control Board (CPCB) is planning to provide subsidy to biomass pellets manufacturers to encourage sustainable fuel. To promote pellet manufacturing the board has planned a fund of Rs 50 crore to be provided as subsidy to manufacturers in Punjab, Haryana, Rajasthan, Uttar Pradesh and Delhi.

Initially the Power Ministry had suggested the use of 5 per cent to 10 per cent biomass as co-firing in coal-fired thermal power plants.

But due to the scarcity of pellet manufacturers and power plants not preferring the use of biomass as fuel because of short supply there was not much progress.

This strategy aims to resolve the problem of crop residue burning, especially after paddy harvesting at the beginning of winter, when air quality deteriorates in the NCR.



Hence to ease pollution the government wants to promote the use of green fuel. □

## Durian Introduces Premium MID-Century Modern Furniture



With the introduction of Durian's mid-century modern range of furniture, the brand has welcomed a fresh new perspective to luxury design coupled with quality materials and a unique insider perspective on the modern Indian lifestyle. The new Durian range comes as a high-end spin to the trendier mid-century modern design so prevalent in furniture and interior spaces.

Velvets and prints are the true stars of this range, with L-shaped sofas, sectionals, and accent chairs all upholstered in premium fabric blends. Rich jeweled tones of reds, greens, and blues interspersed with accent chairs, benches, and ottomans in floral and abstract print fabric, the collection concentrate on the

interplay of colours and textures to add interest to your space. The fabrics are highly abrasion resistant, OEKO-Tex certified, and are chosen to make the pieces durable and good for everyday wear and tear.

The collection is also dotted with sleek coffee and side and centre tables in durable pre-seasoned, kiln-dried solid beech wood famously known for its anti-warp and termite-resistant properties. Beech being a sustainable solid wood option coupled with FSC certification, the range, much like all other pieces by the brand, ensure desirable environmental practices through sourcing to manufacturing and beyond.

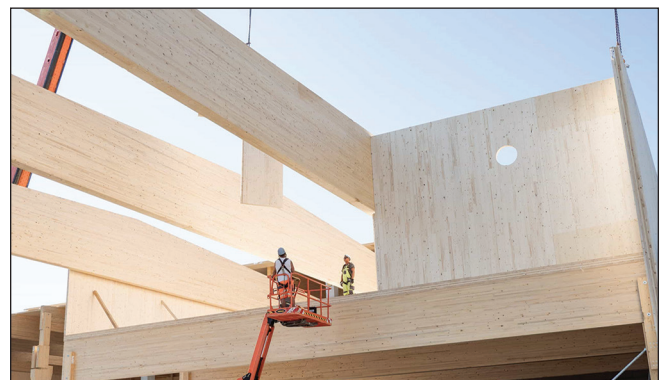
The uncluttered, understated design ethos reflects a mid-century modern style defined by minimal ornamentation and sleek and crisp lines, created using premium materials and high-end finishes like a comprehensive 6-step polish. This variety of hues and shades is punctuated by warm wood and veneer in walnut, ebony, or oak finishes. Colourful, bold, yet timeless pieces of furniture will enhance the luxurious vibe of your home.

The range includes a few different designs of sectional sofas, accent lounge chairs, benches, coffee tables, dining sets, entertainment units, and other furniture essentials. The introduction of the range has seen an overall growth in engagement rate by almost 20% on a significant rise in social interactions for the brand. The interest in these pieces has started picking up in different markets of the country and is peaking the interest of the brand loyalists overall. □

## Stora Enso launches wood building kit for low-carbon, pre-manufactured construction

Stora Enso has launched a wood building kit comprising pre-manufactured, custom-made applications delivered just-in-time to the building site, called Sylva. The kit aims to enable faster construction, reduced costs, more efficient use of raw material and fewer emissions than concrete or steel. "One of the major reasons why the construction industry's carbon emissions have reached its highest level is its constant over-reliance on carbon-intensive materials such as steel and concrete," said Lars Völkel, executive vice-president and head of the wood products division at Stora Enso. "Recent engineering innovations based on massive wood will wean the dependence on these materials. Today we can build higher, stronger and lighter than ever with wood, and now we make it even easier thanks to Sylva." Sylva is Stora Enso's range of engineered and prefabricated products such as cross-laminated timber (CLT), laminated veneer lumber (LVL) and glued laminated timber (GLT). The Sylva kit reportedly includes custom-made walls, floors, roofs, stairs, beams and columns optimise the use of massive wood to suit buildings of all typologies and scales for specific project needs.

Stora Enso also reported that its automated coating line, being built in Ybbs, Austria, will further enhance the value and quality of the Sylva components by offering high-quality water-based coatings, protecting them against moisture, sunlight, insects and fire. This will result in shorter construction



**Wood as a building material can instantly cut up to 70% of emissions and this way ensure that the construction industry is part of the solution to end global warming.**

times, decrease costs for construction companies, and provide added value and improved product quality. "By delivering prefabricated, easy-to-install components to the construction sites, we respond to the increasing trend of off-site construction while offering a solution to the industry's labour shortage. Sylva by Stora Enso is a game-changer for making this happen, replacing concrete and steel with renewable wood to enable a circular, low-carbon construction process," concluded Mathieu Robert, head of building solutions at Stora Enso. □

## Sonear Industries to set up 2 units in Haryana, UP for about ₹ 150 crores

Sonear Industries Ltd., which provides interior design solutions, will enter the laminate and medium density fibre (MDF) boards business. The company will set up two new factories at an estimated cost of Rs 150 crore to manufacture laminates and MDF boards in Yamunanagar in Haryana and near Bareilly in Uttar Pradesh. The new facilities will start in the first quarter of 2023 and beginning 2024 respectively.

The new factories will have a combined capacity of 300 cubic metre (CBM) per day and they would have an annual revenue potential of Rs 500 crore at their peak utilisation, according to company officials.

“Like most other industries, the plywood and construction sector in India had to suffer multiple setbacks during the first two years of the Covid-19 pandemic. However, owing to quick economic recovery and other favourable factors, this is the right time to expand operations,” said Jitendra Kejriwal, founder, Sonear Group of Companies.

Kejriwal said that due to rapid urbanisation and improving infrastructure, the plywood and construction sector is going to witness unprecedented growth. “The demand for homes, offices, hospitals and other facilities with smart and cost-effective furniture is going to multiply in the near future. That’s why, we, at Sonear, have decided to expand our business operations to cater to this demand,” he said.

The factory in Haryana will produce matte-finish laminate, textured laminate, gloss-finish laminate, metallic laminate, PVC-finish laminate and exterior laminate. The Uttar Pradesh will produce all product subcategories of MDF, including thin



Company that provides interior design solutions entering laminated boards business

and thick, pre-lam and other value-added products.

“Our objective is to strengthen our foothold in the Indian plywood and construction sector. We have a reputation of producing top-quality products and making sure that our customers are happy and satisfied. To live up to that reputation, we have decided to expand in a phased manner,” said Kejriwal. Sonear, which has an annual turnover of around Rs 100 crore, has operations in Delhi-NCR, Haryana, Punjab, Uttar Pradesh, Bihar, Odisha, Telangana and Maharashtra. The company has a dealership and distributor network of more than 2,000 and employees more than 400 people. □

## Environment Ministry grants huge relief to Indian handicraft exporters ahead of CITES CoP-19 meeting



The Ministry of Environment, Forest and Climate Change on Monday stated that any number of Dalbergia sissoo timber-based items can be exported as a single consignment in a shipment without CITES permits if the weight

of each individual item of this consignment is less than 10 kg.

The net weight of each item will only include timber and any other item used in the product like metal etc. will be ignored. This has come as a huge relief for the Indian artisans and furniture industry.

The 19th meeting of the Conference of Parties to Convention on International Trade in Endangered Species of wild fauna and flora (CITES) is being held in Panama from November 14-25.

As per the official statement of the Ministry of Environment, Forest and Climate Change, “Shisham (Dalbergia sissoo) is included in Appendix II of the convention, thereby requiring to follow CITES regulations for the trade of the species.

As of now every consignment of weight above 10 kg requires a CITES permit. Due to this restriction exports of furniture and handicrafts made of Dalbergia sissoo from India have been continuously falling from an estimated 1000 crore Indian Rupees (129 million USD) per annum before the listing,

to 500-600 crore Indian Rupees (64 to 77 million USD) per annum after the listing.

The decrease in exports of Dalbergia sissoo products has affected the livelihoods of around 50,000 artisans who work with the species, the official release added.

“On India’s initiative, a proposal to clarify the quantity of Shisham (Dalbergia sissoo) items such as furniture and artefacts was considered in the current meeting. After sustained deliberations by Indian representatives, it was agreed upon that any number of Dalbergia sissoo timber-based items can be exported as a single consignment in a shipment without CITES permits if the weight of each individual item of this consignment is less than 10 kg” ANI quoted the Ministry as saying.

During the 17th meeting of the Conference of Parties (CoP) in Johannesburg, South Africa in 2016, all species of Genus Dalbergia were included in Appendix II of the convention, thereby requiring to follow CITES regulations for the trade of

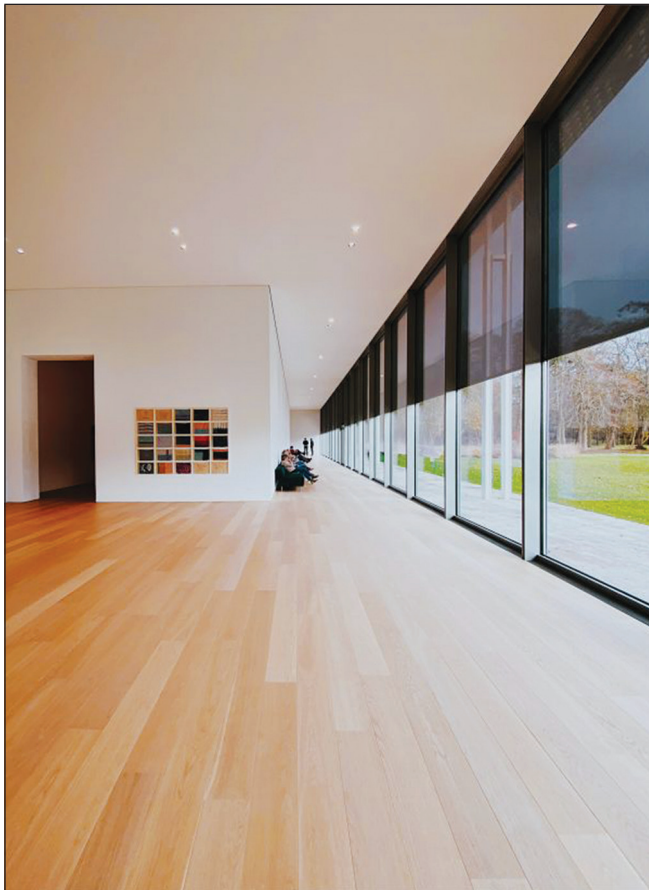
the species. In India, the species Dalbergia sissoo (North Indian Rosewood or Shisham) is found in abundance and is not treated as an endangered species.

However, concerns were expressed regarding the challenges in distinguishing different species of Dalbergia in their finished forms.

The countries expressed that there was an urgent need for developing advanced technological tools for distinguishing the finished wood of Dalbergia, especially at the Customs point.

Considering this aspect and in the absence of a clear technology for distinguishing the finished wood, the CoP did not agree to de-list the Species from CITES Appendix: II. However, the relief given in terms of the weight of each item will solve the problem of Indian artisan communities to a great extent and will give a tremendous boost to exports of articles produced by them, the press release read. □

## EPLF: Oak and natural colours will trend in 2023



Jurre Houtkamp/Unsplash.

The Association of European Producers of Laminate Flooring (EPLF) has announced the laminate flooring trends for 2023, revealing that trends will lean towards more durable and natural designs, especially towards Scandinavian and Nordic designs.

In particular, next year’s trends will prioritise natural

colours, textures and materials that will translate how important sustainability has become for customers who seek authenticity and lifetime performance.

According to EPLF, manufacturers tend to stay away from cold grey tones homes and playful eye-catching decors that consumers are leaving out of their homes.

Designs remain very close to the original wood patterns with authentic, light, friendly, and fresh decors, with natural matte texture as well as subtle knots, that translate a harmonious look.

Blond, natural brown, whitened oak colours will please the customer’s eye and recreate a natural and warm cosy cocoon at home. As for colours and materials, raw oak is the consumer’s favourite, EPLF predicts.

The aim is to create calmer and more harmonious decors from light, pure natural tones through to nutmeg brown tones. However, some members already see the first signals and interest in wood types beyond oak.

With these in mind, EPLF members are committed to come with new original design and technologies that will fulfil the clients’ expectations. They will also strive to achieve noise reduction, water resistance or sustainability in the quality of their floors.

EPLF reported that their members have produced an increasing number of water-resistant products to meet customers’ desire to include more and more wood in rooms that previously did not.

Sustainability is more than ever at the heart of their members’ concerns as they contribute to building a more circular economy. They focus on supplying authentic, environmentally friendly, as well as lifetime performant products.

This is captured in the EPLF’s Made With Wood campaign, which showcases the environmental properties of laminate flooring. □

## Modvion secures partnership with RES to build wooden towers for future wind parks

RES, an independent renewable energy company, has signed a letter of intent to include Modvion's wooden wind turbine towers in future wind energy projects. The agreement outlines a future order of Modvion towers worth approximately 4 billion Swedish krona.

The partnership means that RES Nordics will promote Modvion's modular, wood-based, tower technology to their wind turbine suppliers. The goal is for turbine manufacturers to purchase wooden towers to use in RES-developed wind farms.

Switching from emission-intensive materials, like steel and concrete, to a renewable material like wood enables reductions in emissions. The wood also stores carbon, so the tower acts as a carbon sink, thereby reducing emissions for the entire turbine by 30% compared to steel or concrete turbine towers.

"Innovative solutions that make our renewable energy projects even more sustainable is something that we want to promote," said Matilda Afzelius, CEO of RES in the Nordics. "RES has committed to the Science Based Target initiative (SBTi) which focuses on halving emissions before 2030 and achieve net-zero emissions before 2050, and innovations such as Modvion's are beneficial for reaching such targets."

The agreement goes on to say that Modvion will continue to supply RES-developed wind farms with around 20 towers per year from 2026-2036. This order totals around 4 billion Swedish krona.

"RES shares our vision of a future with carbon-neutral wind power," said Otto Lundman, CEO at Modvion. "RES wind farms will become the most sustainable in the world when we provide



LVL modules of Modvion's wind turbine towers.

emission-free towers. We need more companies like RES to lead the way in building renewable energy with renewable materials."

Modvion's towers, built with laminated wood, means lighter towers and less need for expensive reinforcements as compared to building with steel. The towers are built in modules that can be transported on standard trucks on public roads, without the need for road-closures.

"In order to generate the most cost-efficient wind energy we need to build taller turbines. That's where Modvion's solution becomes very interesting. Being able to reach the stronger winds at heights of 290m while reducing emissions is an offering that we want to include in our projects as soon as possible. This aligns with RES's vision to create a future where everyone has access to affordable zero carbon energy," concluded Afzelius. □

## Govt approves formation of advisory group to track developments in bamboo sector

With the aim to streamline the developments in the Bamboo sector, the Union Agriculture Minister Narendra Singh Tomar approved the format. As per the official statement, the Advisory group will encompass the representation of various stakeholders' viz., academicians, researchers, innovators, progressive entrepreneurs, designers, farmer leaders, marketing specialists and policy makers.

The Union Agriculture Secretary will be the Chairperson and Mission Director of National Bamboo Mission will be the Convener of the Committee. The members of the committee shall advise the Ministry of Agriculture & Farmers Welfare on issues and technologies in propagation, plantation of bamboo & intercropping, primary processing, product development, value addition, market infrastructure and linkages, processing machineries, skill development etc.

The inter-ministerial and public-private consultation is envisaged to dovetail the bamboo initiatives of the Ministries/ Departments and to help revamp the developmental architecture of the sector by incorporating synergy between all the sections

related to the bamboo value chain.

The restructured National Bamboo Mission (NBM) was launched during 2018-19 as a Centrally Sponsored Scheme. NBM mainly focuses on the development of complete value chain of Bamboo sector to link growers with consumers starting from planting material, plantation, creation of facilities for collection, aggregation, processing, marketing, micro, small & medium enterprises, skilled manpower and brand building initiative in a cluster approach mode.

Over the years of the interventions through policy, facilitations and awareness creations, the bamboo industry is witnessing a phase change by the opening of multiple avenues of the resource utilization.

Recently, the Prime Minister inaugurated the new terminal of the Bengaluru (Kempagowda) Airport in which the versatility of bamboo as an architectural and structural material has been proved and the destiny of this green resource defined as the 'green steel'. □

# Exhibition Outlook 2023

**March 1-4, 2023**

**MIFF**

**Venue:** World Trade Centre Kuala Lumpur (WTCKL) and Malaysia International Trade & Exhibition Centre ((MITEC)  
**Website:** 2023.miff.com.my

## Event Highlight

The Malaysian International Furniture Fair (MIFF) has spearheaded the furniture trade scene for years. Every year, quality exhibitors and buyers from all over the world converge on this global stage.

MIFF welcomes over 6,000 quality buyers from over 140 countries. In recent years, the fair has drawn more and more influential buyers who purchase in bulk on the spot.

From high-quality modern and contemporary furniture to tried-and-true classics, over 600 international and Malaysian exhibitors show off their latest collections and designs for bedrooms, living areas, kitchen, bathrooms, children, office, commercial foyers, hotel lounges and outdoor living.

MIFF provides a robust B2B platform for buyers to interact with suppliers, connects people with innovative products and a ready market, and also organises free-entry seminars with top industry speakers to provide insights, discuss coming trends and share market intelligence.

## Visitor Profile:

- Furniture importers
- Wholesalers and retailers
- Architects
- Interior designers and decorators
- Chain stores
- Furniture and furnishing-related trades

## Product Showcase:

- All types of furniture
- Furniture accessories
- Fittings
- Materials and hardware. □

**March 1-4, 2023**

**FURNITURE CHINA @ MALAYSIA SHOW**

**Venue:** Malaysia International Trade and Exhibition Centre (MITEC)

**Website:** www.furniture-china.cn/en/about-fur/malaysia-show

## Event Highlight:

The first edition of China International Furniture Expo (also known as Furniture China) was successfully held in 1993. Since then, Furniture China has been held in Shanghai in the second week of every September.

In 2023, Furniture China will launch its first show in Malaysia in March and join Hands with MIFF to link the suppliers and buyers in the global furniture industry by both online and physical exhibitors.

Furniture China & MIFF will combine both physical and virtual exhibition to provide a greater trade experience. Buyers are given the options to connect with manufacturers in a safe physical environment or accomplish their furniture sourcing need via Furniverse. □

**March 28-31, 2023**

**CIFM /INTERZUM GUANGZHOU**

**Venue:** Canton Fair Complex, Pazhou, Guangzhou

**Website:** www.interzum-guangzhou.com

## Event Highlight:

As one of Asia's biggest woodworking machinery, furniture production and interior desing event, CIFM/interzum guangzhou provides a one-stop platform for suppliers from all vertical sectors to showcase a wide range of products and technologies, and meet professional buyers from all over the world. Held in conjunction with China International Furniture Fair (CIFF – Office Furniture Show), the exhibition covers the entire industry vertical and features 1,100 exhibitors and 139,574 visitors in 2022

## Visitor Profile:

- Furniture manufacturing
- Furniture accessories manufacturing
- Custom Furniture
- Furniture wholesale and retail
- Furniture accessory and machinery trading
- Woodworking/upholstery and bedding machinery manufacturing
- Interior design
- Others
- Do-it-yourself (DIY) and build-it-yourself (BIY)
- Wood or plastic product trading
- Institutions

## Exhibitor Profile:

- Function and components
- Materials and components for interior works
- Machinery and accessories for upholstery and bedding
- Wood product, panel and laminate
- Adhesive, paint and other chemical materials
- Machines and auxiliary machines for woodworking furniture production
- Organization, service and media. □

**May 15-19, 2023**

**LIGNA**

**Venue:** MesseGelande 30521 Hannover

**Website:** www.ligna.de

## Event Highlight:

More than 90,000 professional visitors from the woodworking and wood processing sectors come to LIGNA the world's leading trade fair for woodworking and wood processing plant, machinery and tools, from all over the world to discover innovative machinery, plant and technology from across the entire wood industry.

Global market leaders welcome this opportunity to stage live demonstrations of their plant and machinery in operation. Every two years, the wood industry has its own season.

The show is not only the place to discover innovations, conclude deals and build networks. In addition to the pure exhibition, the show has numerous special formats to offer for the entire spectrum of the woodworking and wood processing industry that go beyond the pure exhibition area

The 2023 edition of the event will show trends and innovations of the woodworking industry. It will put the spotlight on the

digital transformation of the woodworking sector, prefabrication processes in timber construction and the bioeconomy. Machinery for forestry, wood-based panel production or machine components and automation technology will be shown at the world's leading trade show for the industry.

**Product Showcase:**

- Energy from wood
- Wood-based panel production
- Machinery for forestry, roudwood & sawntimber production
- Machine components and automation technology
- Surface technology
- Sawmill technology
- Tools and machinery for custom mass production

**Hall Plan:**

- Tools, machines and system for individual and series production
- Surface technology
- Wood-based panel production
- Sawmill technology
- Energy from wood
- Machine components and automation technology
- Machines and technical equipment for forestry, roudwood and sawntimber production. □

---

**May 29-31, 2023**

**DOMOTEX ASIA**

**Venue: National Exhibition and Convention Center (Shanghai)**

**Website: [en.dacf.cn](http://en.dacf.cn)**

**Event Highlight:**

DOMOTEX asia/CHINAFLOOR is one of the leading flooring exhibitions in the Asian-Pacific region and the second largest flooring show worldwide. As part of the DOMOTEX trade event portfolio for the global flooring industry.

More than 66,000 industry professionals from the merging Asian market and 107 other countries attend each year and have utilised the event as their ideal platform to sell their flooring products, form partnerships, locate suppliers and manufactures, and network with industry leaders.

The exhibition product categories include wood flooring, bamboo and cork flooring, flooring technology, machine-made carpets, hand-made carpets, carpet technology, resilient flooring, sports flooring & WPC. □

---

**September 5-8, 2023**

**CIFF / WMF**

**Venue: National Exhibition and Convention Center (Shanghai, Hongqiao)**

**Website: [www.ciff.furniture](http://www.ciff.furniture) / [www.woodworkfair.com](http://www.woodworkfair.com)**

**Event Highlight**

Driven by innovation and design, CIFF – China International Furniture Fair is a business platform of strategic importance both for the domestic market and for export development, It covers the entire supply chain, bring top-tier companies together, promoting new products, ideas, and solutions in order to meet constantly-evolving market needs, and organising events both online and offline, as well as B2B meetings.

In view of the rising demand in innovative technologies across the entire supply chain of furniture production and woodworking

industry, Shanghai International Furniture Machinery Fair (WMF) has been collocated with CIFF (Shanghai) once a year at Shanghai Hongqiao, China since 2018, to serves as a one-stop sourcing platform connecting upstream and downstream enterprises and stretching across the whole woodworking industry

In 2022, the show continued to maintain its high standard with an exhibition area of 45,000 sqm and more than 300 exhibitors, gathering leading enterprises in various sub sectors of home manufacturing technology. The fair has gathered exhibitors from around the world to showcase cutting-edge equipment and machinery.

**Scope of Exhibits in WMF**

- Tools and machinery for custom and mass production
- Machine components and automation technology
- Surface treatment technology
- Wood-based panel production
- Wood primary processing sawmill technology, energy from wood
- Wooden architecture technology
- Forestry technology
- Green production and safety control
- Wood products packaging
- Raw materials and accessories for wood production
- Knives, blades, machinery accessories and hand tools
- Engraving machinery
- Upholstery machinery and CAD/CAM technology. □

---

**September 20-23, 2023**

**IFMAC**

**Venue: JIEXPO Kemayoran, Jakarta**

**Website: [www.ifmac.net](http://www.ifmac.net)**

**Event Highlight:**

The next edition of Vietnam Wood will be held in Saigon exhibition & Convention Center (SECC) from September 20-23, 2023.

The exhibition will serve as an efficient platform for exhibitors to showcase their product, network and present the company and businesses to the emerging market of Indonesia and the Southeast Asia Region.

Besides, it will also help visitors discover and experience the latest innovations and technology for furniture manufacturing and woodworking industry. The hotspot of new products, information, innovation and technology from the key players in the furniture and woodworking industry will be in one place. □

---

**September 20-23, 2023**

**VIETNAM WOOD**

**Venue: Saigon Exhibition & Convention Centre (SECC)**

**Website: [www.chanchao.com.tw/VietnamWood/](http://www.chanchao.com.tw/VietnamWood/)**

**Event Highlight:**

The next edition of Vietnam Wood will be held in Saigon Exhibition & Convention Centre (SECC) from September 20-23, 2023.

VietnamWood 2022 gathered 233 exhibitors from 25 countries and regions to display their manufacturing production solutions and innovative machinery and technology for extensive to extent the business contacts and technical exchanges.

The next edition of the show in 2023 will continue the momentum to bolster the growth of the wood working industry in Vietnam. As usual, the event will still feature live demonstrations of tools, machinery and equipment, and production lines. □



**DURO**  
**NATURE'S SIGNATURE**<sup>®</sup>  
PREMIUM VENEERS & PLYWOODS

**World-class Interiors  
with an Italian soul.**

Every shade is an inspiration in  
itself, designed to add magic to  
your imagination, and your  
space.



**Duroply Industries Limited**

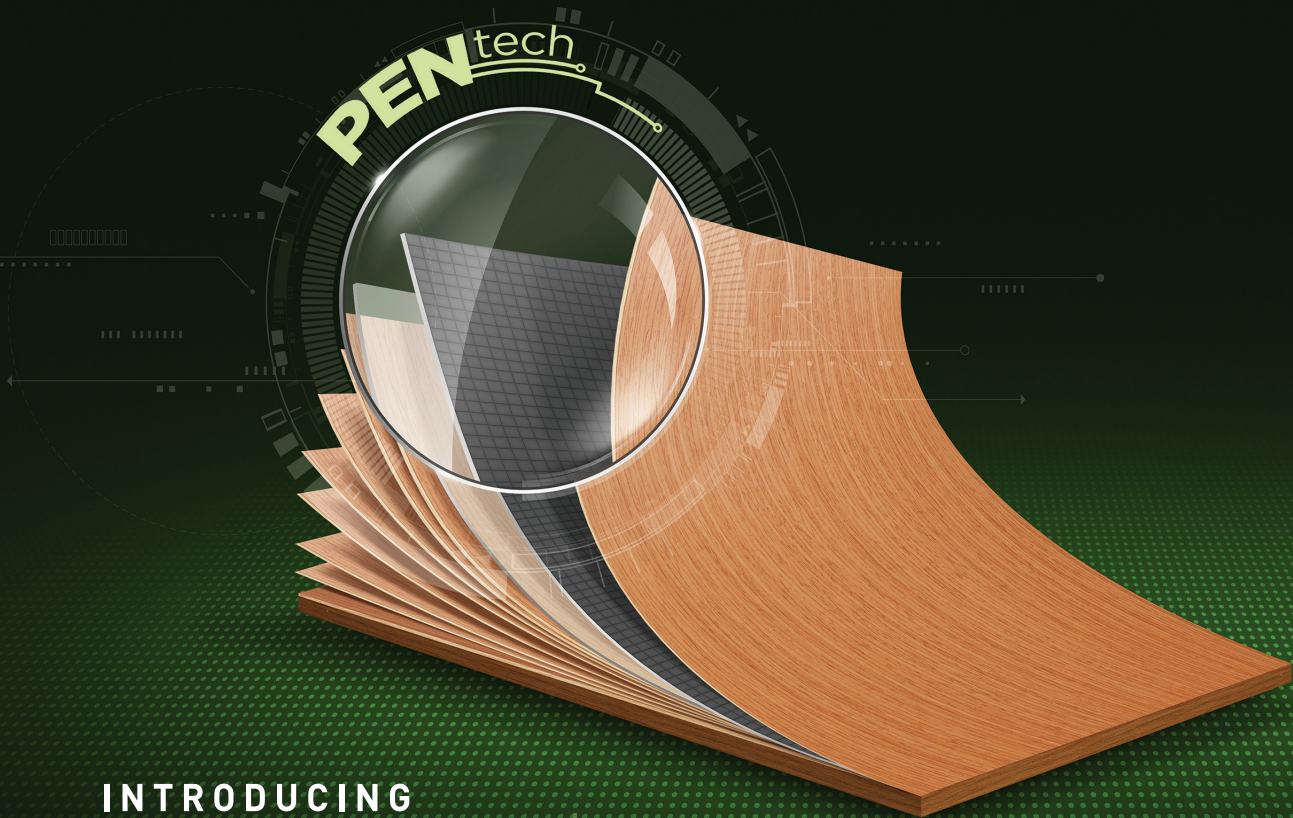
BLOCK BOARD · PLYWOOD · VENEERS · DOORS

**Toll Free: 1800-345-3876 (DURO) | Website: [www.duroply.in](http://www.duroply.in)**

**E-Mail: [corp@duroply.com](mailto:corp@duroply.com) | Find us on:**     

Disclaimer: The actual product may vary from the product shown as veneers are natural products and designs are unique and naturally evolved.  
EURIGATO DYED CRYSTAL GREY

# PLYWOOD KE PEECHE AB SCIENCE HAI.



INTRODUCING

**GREEN  
PLATINUM**

**2X** FIRE RESISTANT  
WATER PROOF  
MONEY BACK WARRANTY

**Green Platinum** is two times as effective as other available plywood in its range. It comes with **PEN Tech**, which adds a protective mesh between the layers as well as on the surface of plywood, rendering it **two times more fire resistant**. Enriched with un-extended BWP resin, Green Platinum is **two times as boiling water proof** as regular fire resistant plywood. All these features now come with **2X money back warranty**, making Green Platinum the perfect choice for your interiors!



To know more,  
scan this QR code  
and Ask Greenply,  
or WhatsApp  
<Green Platinum>  
to 7044446966